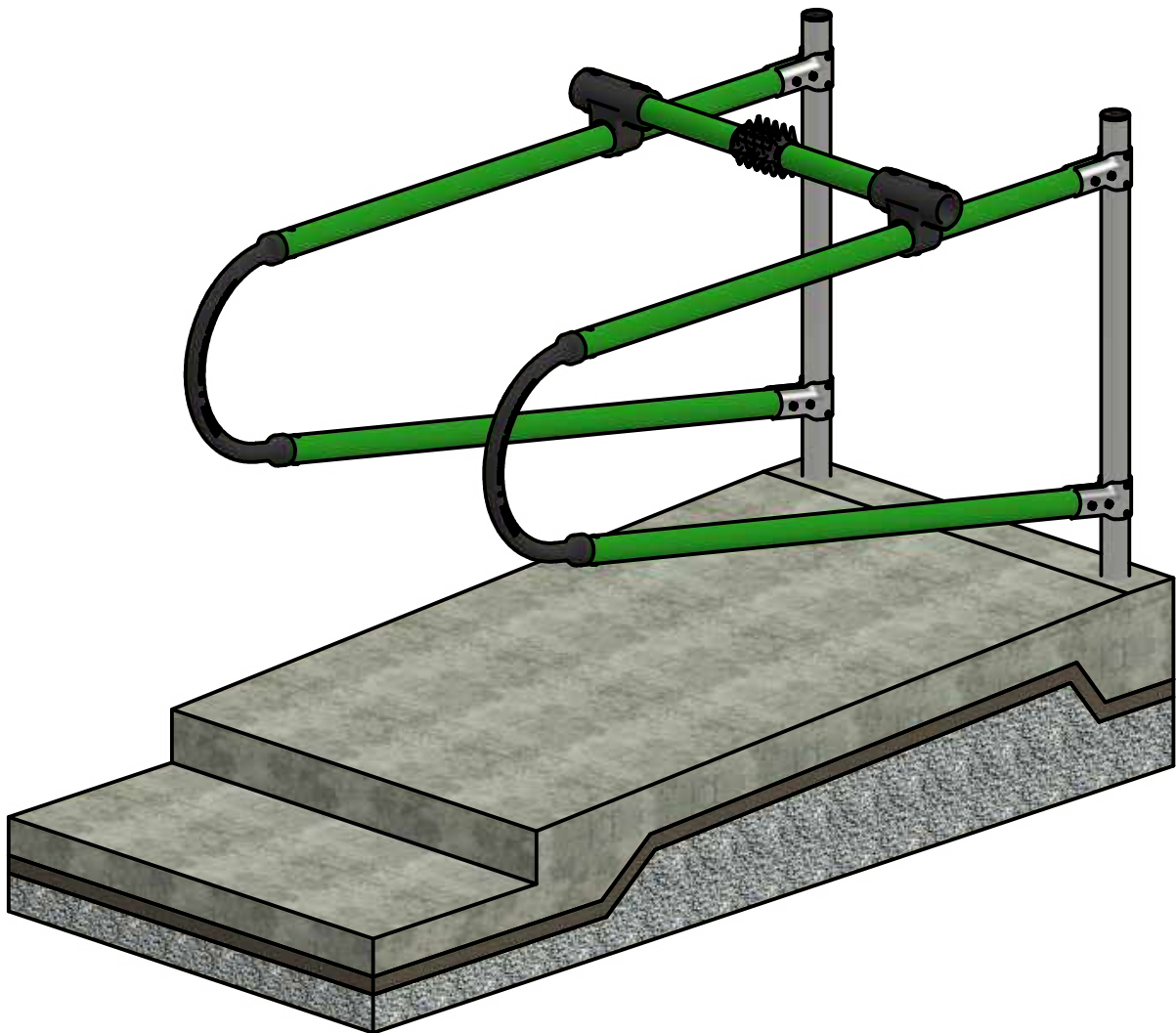




Cubicle / Freestall Installation Manual



Safety and Care Advice

Thank you for purchasing the EASYFIX™ Cubicle!

Important

Please note the following safety instructions. EASYFIX™ is not liable for damages due to non-compliance.

- Read all instructions carefully.
- Check you have all required components and fixings listed on pages 2 & 3.
- Keep children and animals away from work area, small parts are a choking hazard.
- We recommend the use of power tools when screwing the fixings.
- If drilling is required, ensure there are no water pipes where you intend to drill.
- Dispose of packaging carefully and responsibly.



Helpful Hints

- Assemble the parts in the correct order as outlined in this manual first, then fix after all parts are assembled.
- If multiple cubicles are being assembled, carry out Step 1 for all of the cubicles, then Step 2 for all of them and so on.
- Scan the QR code for video instructions on assembly.



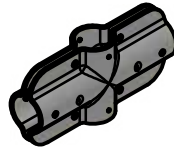
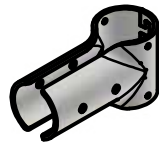
Components

Set in
Concrete

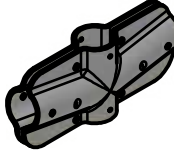
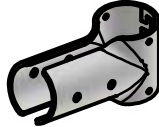


1 Post

Bolted

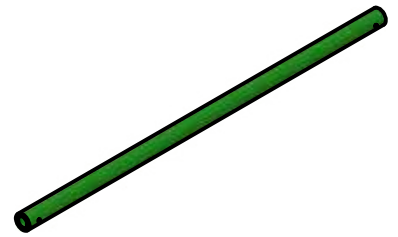


Straight



Angle
(Calm)

2 Clamp



3 Top Pipe



4 Bottom Pipe

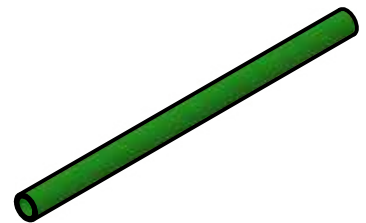


Fixed



Flex

5 Coupling



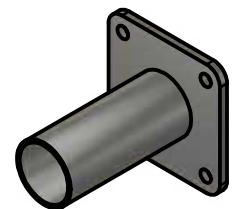
6 Neckrail



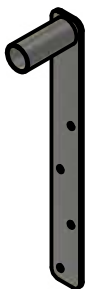
7 Scratcher



8 Loop



**9 Direct Steel End Wall
Bracket**



**10 Extended Steel
End Wall Bracket**

*Other versions of wall connectors may or may not be applicable to your order.

Fixings



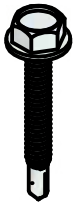
A) M12 Through Bolt



B) M10x100mm Bolt



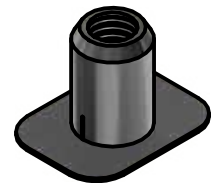
C) M10 Lock Nut



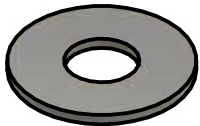
D) Tec Screw



E) M8x75mm Screw



F) M8 Rivet Nut



G) 25mm Washer



H) M6x40mm



I) M12 Lock Nut



J) M12x40mm Bolt



K) Plug



L) 80mm SS Screw

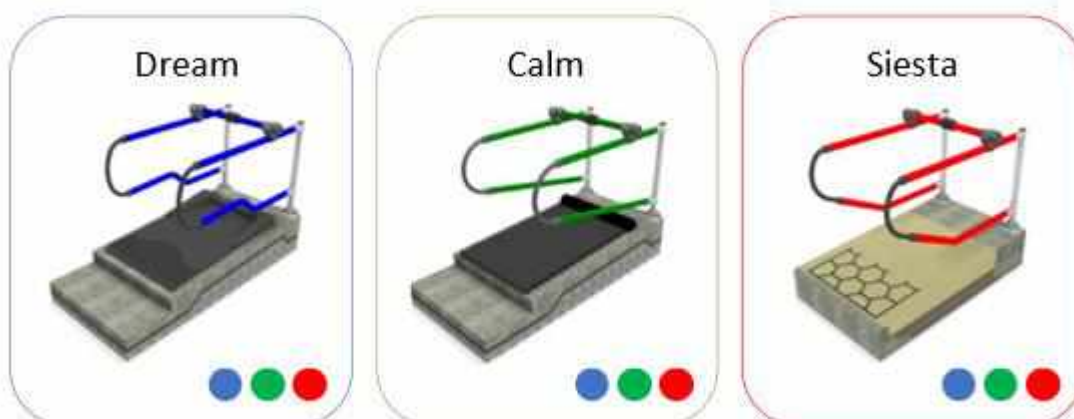


M) Tec Screw

Assembly Overview

Models

All assembly instructions are consistent throughout all cubicle models. The green Calm model is used for illustration purposes. All models are available in three colours, seen below.



Important Assembly Notes

- The top and bottom pipes for the Calm model are the same, but for the purpose of the manual they will be labelled separately, just to account for the different top and bottom pipes in the Dream and Siesta models.
- The top and bottom clamp for the Dream and Siesta models is the same, but for the purpose of the manual they will be labelled separately, just to account for the different top and bottom clamps in the Calm model. Refer to Page Z for more detail on the clamp styles for each model.
- The positioning measurements in the appendices are applicable to the Set in Concrete, Bolt To Floor and Wall Mounted configurations, but for illustrative purposes only the Set In Concrete model is used.
- All measurements are EASYFIX™ recommended and are just a guideline for the assembly. Beds may vary in size and look but the measurement recommendations for positioning remain consistent.

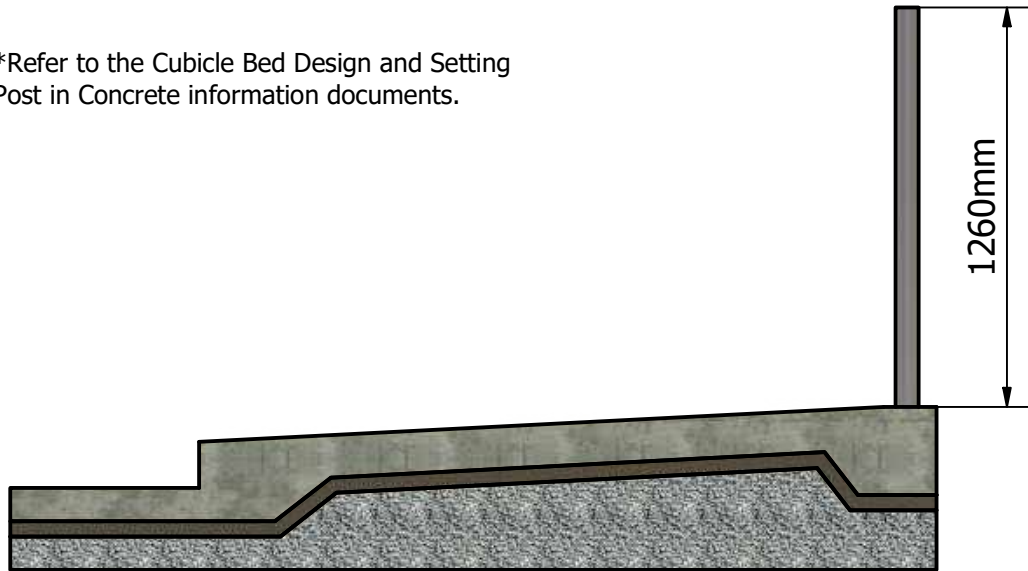
Step 1 - Post Setup

Refer to Appendix A and Appendix B at the back of your manual for full positioning guidelines for the Single and Double post cubicles.

EASYFIX™ recommends a cubicle bed slope of 3-4%.

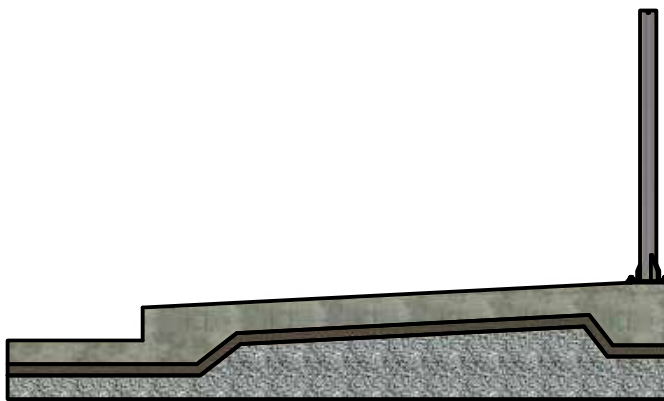
Step 1.1 - Set in Concrete

*Refer to the Cubicle Bed Design and Setting Post in Concrete information documents.



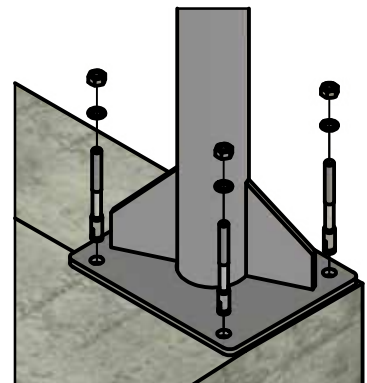
Single Bed

Step 1.2 - Bolt to Floor



Single Bed

M12 Through Bolt Pilot Hole:
Ø12mm x 100mm deep.

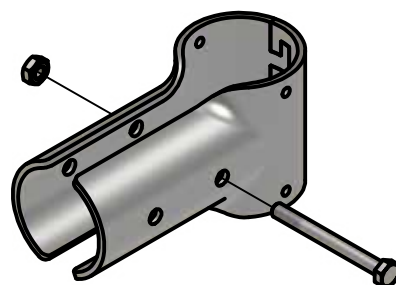


Parts List		
Item ID	Part Name	Qty.
1	Bolted Post	1
A	M12 Through Bolt	4

Step 2 - Pre-assemble the Single Clamps

- For the single-sided clamp, interlock the teeth and feed the M10x110mm Bolt through the hole as shown.
- Do not tighten the bolt fully, only lightly to keep the sub-assembly together.

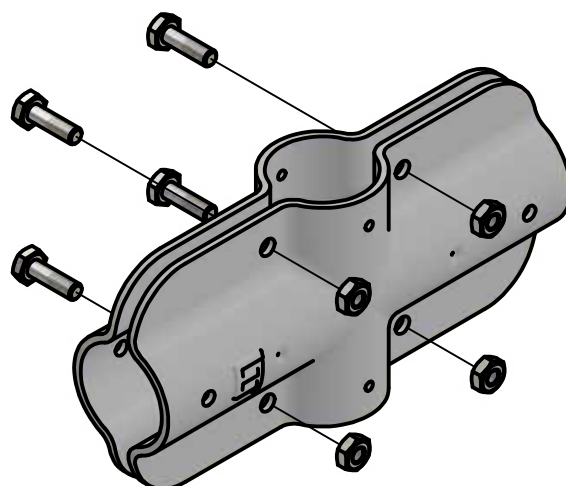
Parts List		
Item ID	Part Name	Qty.
2	Clamp (matching halves)	1
B	M10x100mm Bolt	1
C	M10 Locknut	1



Step 2.1 - Pre-assemble the Double Clamps

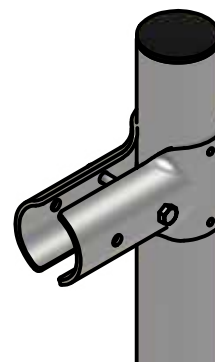
- For the double-sided clamp, push the M12 bolts through both clamps and secure with a nut.
- Do not tighten the bolts fully, only lightly to keep the sub-assembly together.

Parts List		
Item ID	Part Name	Qty.
2	Clamp (matching halves)	1
M	M12x40mm Bolt	4
I	M12 Locknut	4



Step 3 - Slide on the Clamps

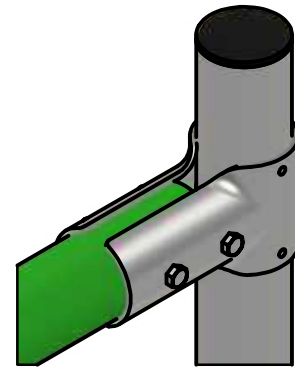
- Slide the pre-assembled clamps over the post.
- If angled clamps are used in your cubicle (Calm model only), lower the angled clamp first as shown in Appendix A/B.
- When the clamp is in place, the bolt can be slightly tightened to hold it in place. **DO NOT OVERTIGHTEN**, as further adjustment may be required.



Step 4 - Attaching the Pipes

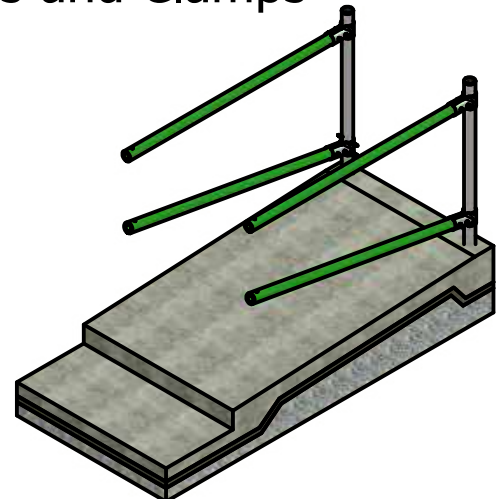
- Place the pipes into the clamps, loosen the tension bolts if required to do so.
- Ensure the holes at the end of the pipes line up with the holes in the clamps and secure the pipes in the clamps using the bolt (B) and locknut (C) provided.

Parts List		
Item ID	Part Name	Qty.
B	M10x100mm Bolt	1
C	M10 Locknut	1



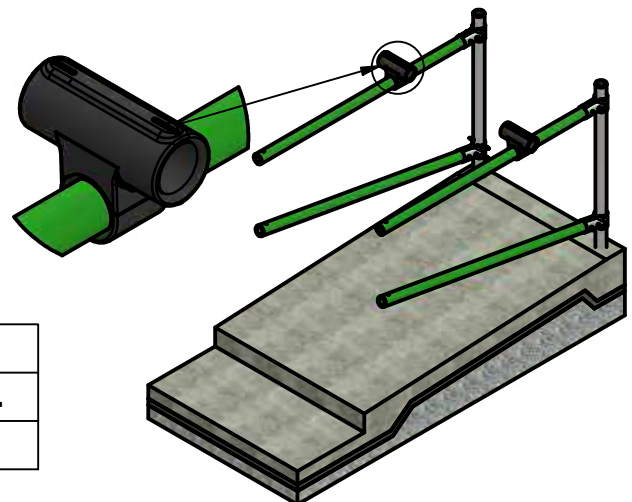
Step 5 - Securing the Pipes and Clamps

- Ensure that the clamps are at the appropriate heights. See Appendix A/B for EASYFIX recommended measurements.
- Tighten the pipe bolts, securing both the pipes and clamps in place.



Step 6 - Placing the Couplings

- Slide a coupling along each of the top pipes.
- Ensure the coupling is put on in the correct orientation as shown.

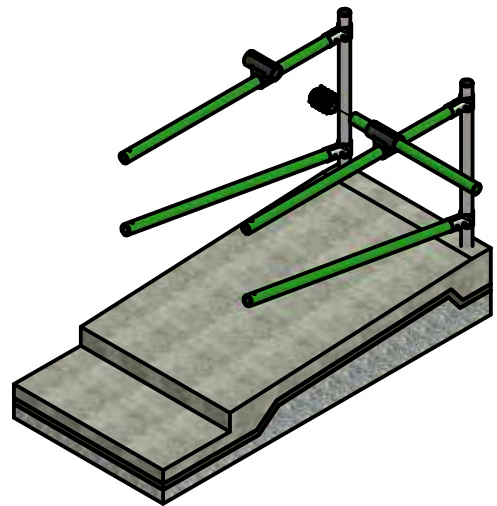


Parts List		
Item ID	Part Name	Qty.
5	Coupling	1

Step 7.1 - Placing the Neckrail & Scratcher

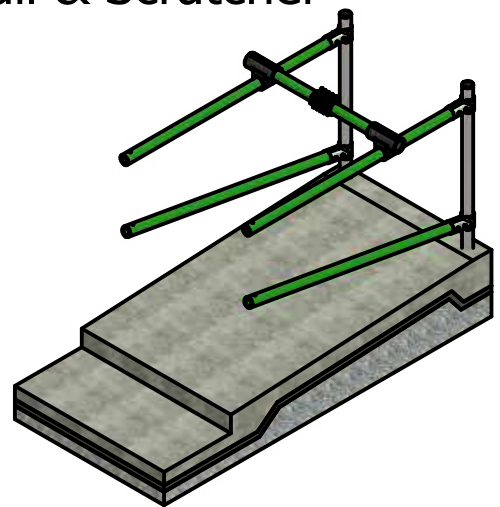
- Insert the neckrail through the coupling from one side and through the scratcher.

Parts List		
Item ID	Part Name	Qty.
B	M10x100mm Bolt	1
C	M10 Locknut	1



Step 7.2 - Placing the Neckrail & Scratcher

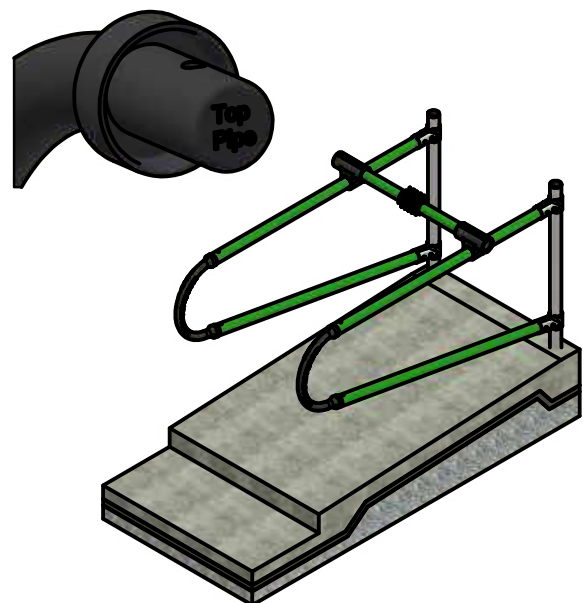
- Continue through the neckrail and insert it in the next coupling.
- Slide the scratcher along the neckrail until it sits in the middle of the bed. This will be later fixed.



Step 8 - Attaching the Loops

- Insert the rubber loop to the appropriate pipe, ensuring that the top side is inserted into the top pipe. The orientation of the loop is printed at the end of the loop.
- Press fit the rubber loop in until the pipe is flush with the inside face of the loop.

Parts List		
Item ID	Part Name	Qty.
8	Loop	1

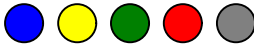


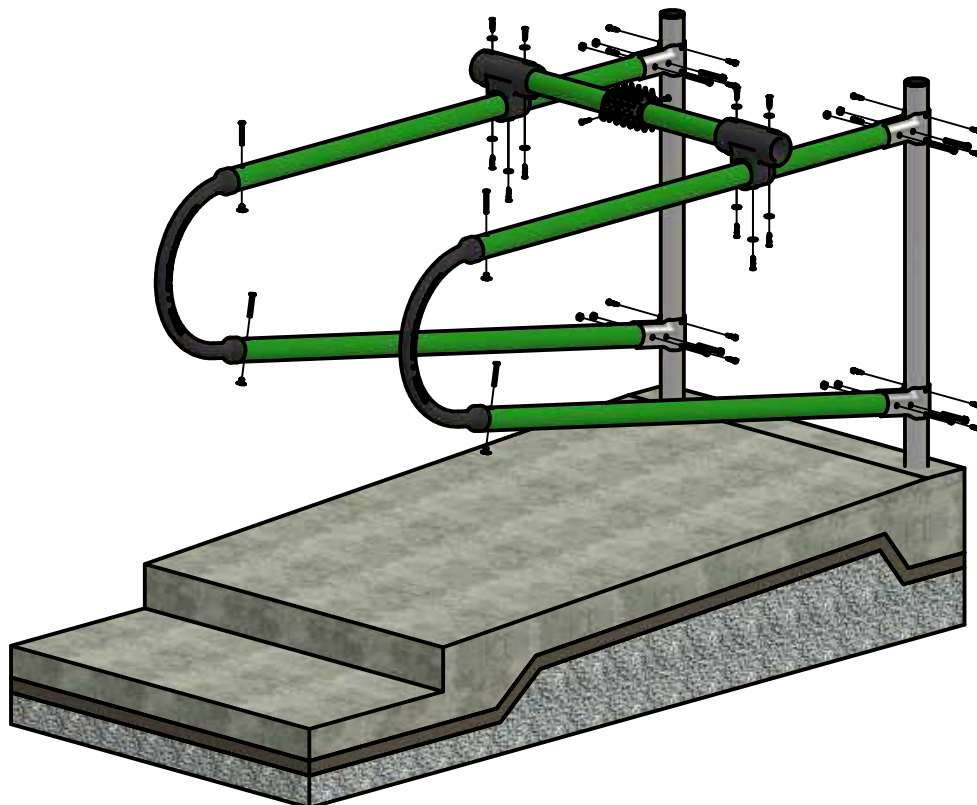
Positioning

Refer to Appendix A for single cubicle assembly positioning guidelines.

- The scratcher should sit in the middle of the cubicle. Use a measuring tape to find the centre of the bed and centre the scratcher along it. Ensure the short spikes of the scratcher face the bed to provide optimal positioning and use for the animal.
- A key measurement is the distance from the neckrail to the heelstone, as can be seen in Appendix A and Appendix B. This measurement should sit between 2058mm (6'9") and 2108mm (6'11").

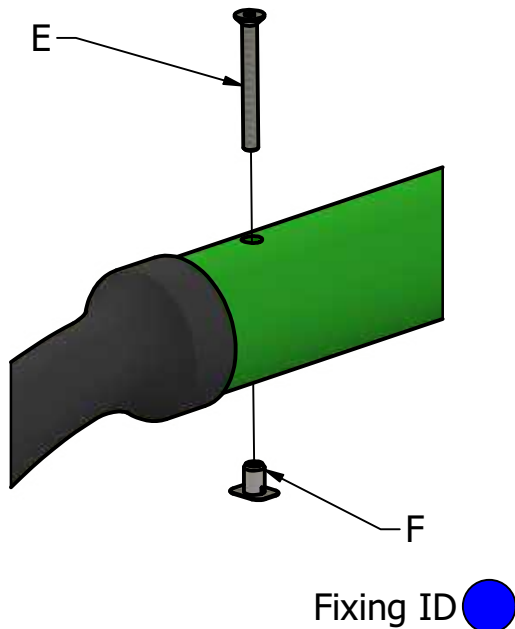
Fixing

- The Fixing ID identifies which bag the fixing belongs to in accordance with the bag identifier on the bag labels. It is advised to use the fixing for the application from the Fixing ID given in the instructions. These ID's are: 
- Detailed descriptions of the following fixings can be found on the next page. Please pay close attention to each Fixing ID and to the relative quantity required.

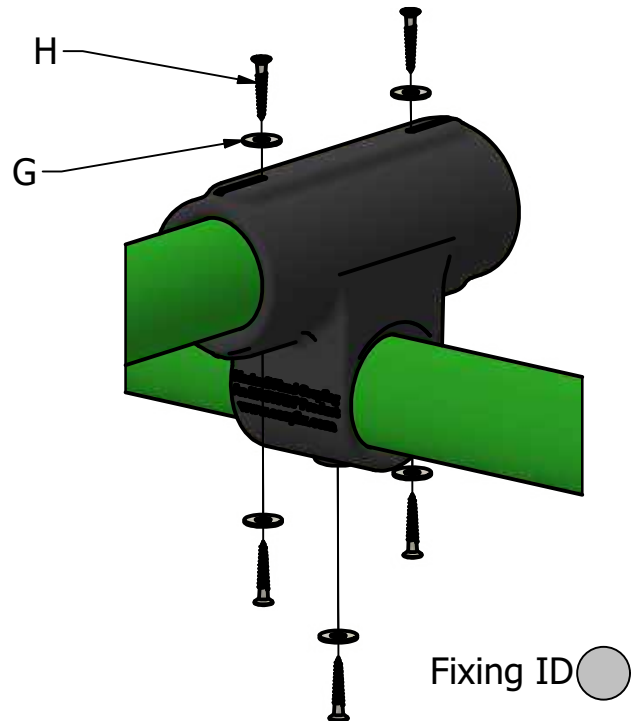


Fixing the Cubicle

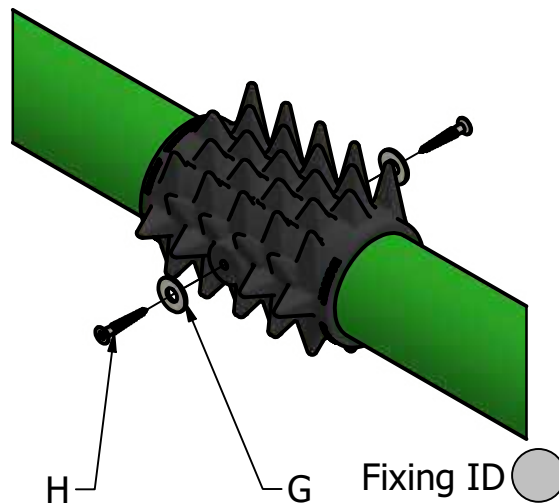
A-Loop to Pipe (Top & Bottom)



B-Coupling to Pipe/Neckrail



C-Scratcher to Neckrail

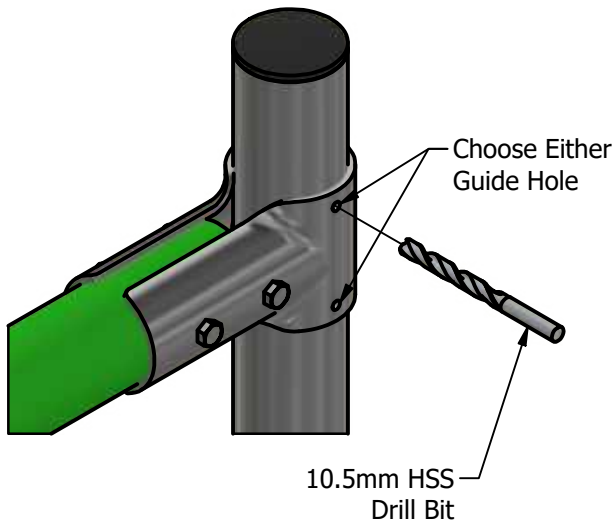


Note: All bolts/fixings should be rechecked & retightened where necessary after the first 3 months of use and once yearly thereafter.

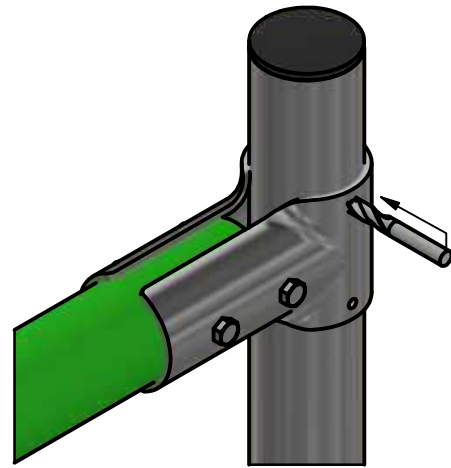
D - Bolting the Single Clamp to the Post

***Note:** The Double Clamp is not required to be bolted to the post.

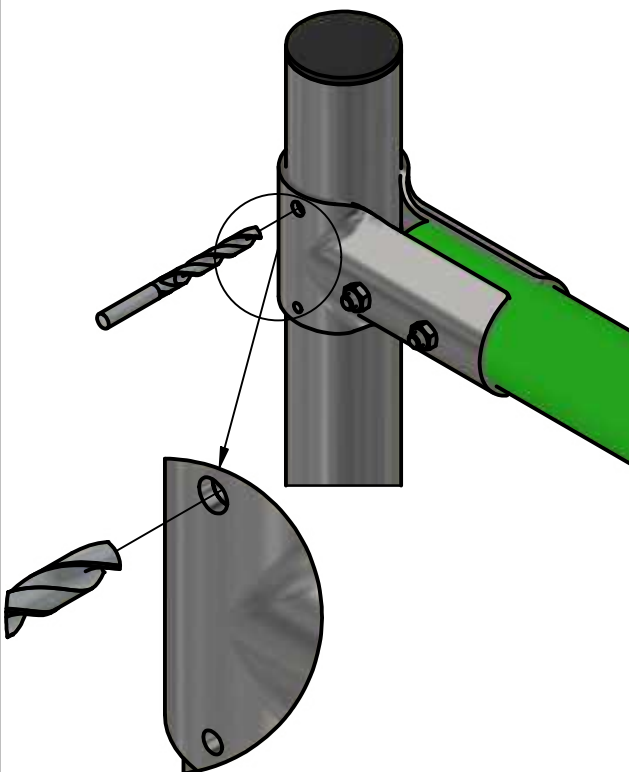
1. Choose Guide Hole



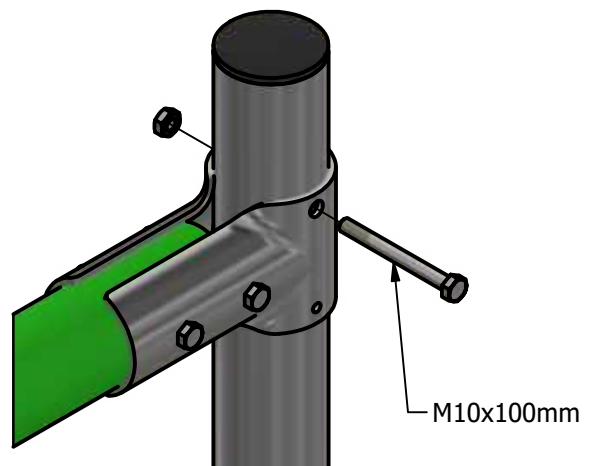
2. Drill 1st Hole



3. Drill 2nd Hole

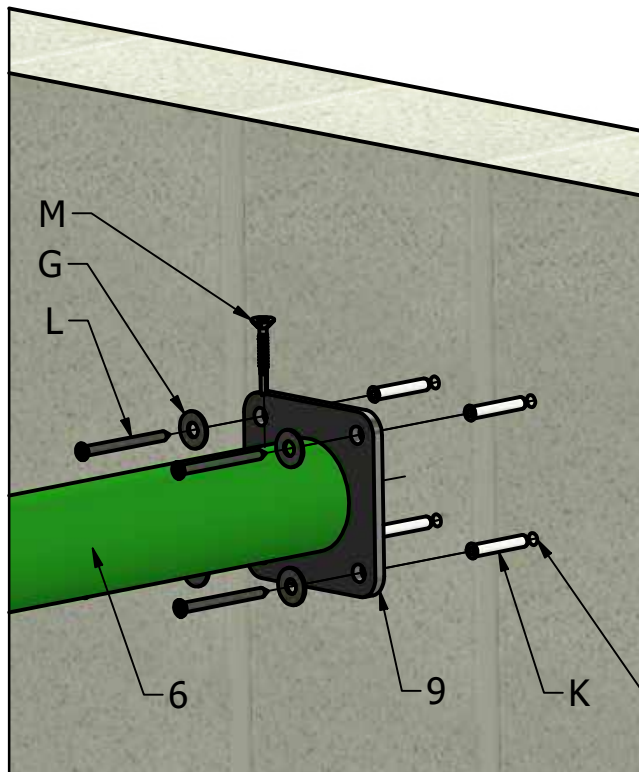


4. Install Bolt



End Wall Bracket Installation

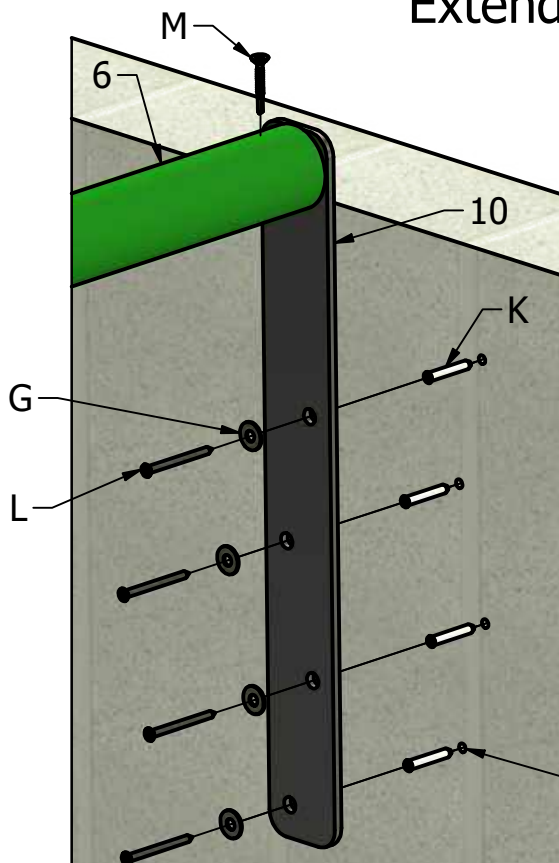
Direct End Wall Bracket



Parts List			
Item ID	Part Name	Qty.	Fixing ID
6	Neckrail	1	-
9	Direct Steel End Wall Bracket	1	-
G	25mm Washer	4	●
K	Plug	4	●
L	80mm SS Screw	4	●
M	Tec Screw	1	●

Ø8mm holes
drilled 90mm deep

Extended End Wall Bracket



Parts List			
Item ID	Part Name	Qty.	Fixing ID
6	Neckrail	1	-
9	Extended End Wall Bracket	1	-
G	25mm Washer	4	●
K	Plug	4	●
L	80mm SS Screw	4	●
M	Tec Screw	1	●

Ø8mm holes
drilled 90mm deep

Appendix A

Note A

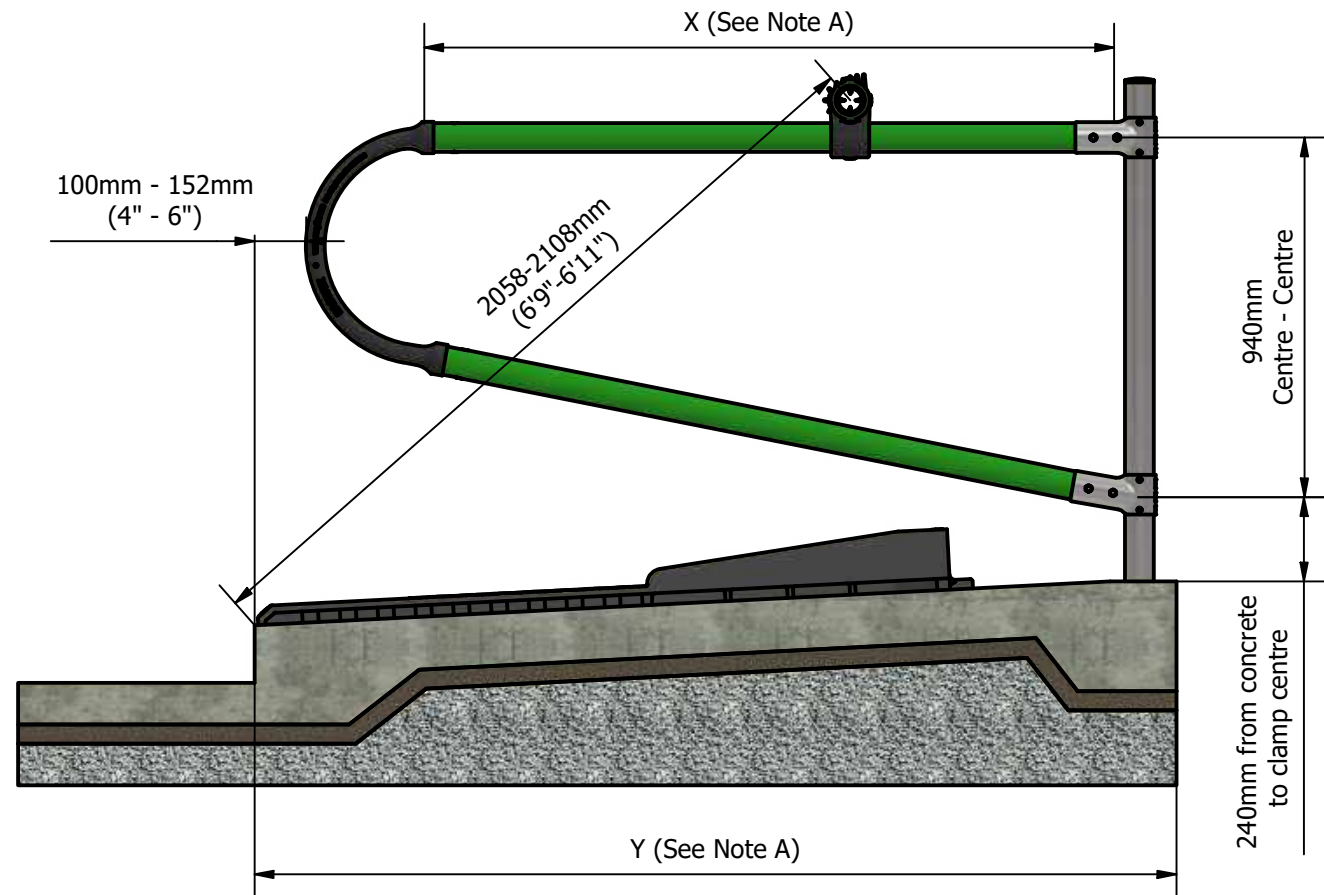
Pipe comes in 1.8m, 2m & 2.2m (5'11", 6'7", 7'3") lengths. To determine X:

For Cubicle bed lengths (Y) of 2286mm-2438mm (7'6" - 8'0").
Use 1.8m (5'11") long pipes.

For Cubicle bed lengths (Y) of 2438mm-2743mm (8'0" - 9'0").
Use 2m (6'7") long pipes.

For Cubicle bed lengths (Y) greater than 2473mm (9'0").
Use 2.2m (7'3") long pipes.

*The 940mm centre to centre measurement between the cubicle clamps is recommended. This can be adjusted for smaller animals.



Appendix B

Note B

Pipe comes in 1.8m, 2m & 2.2m (5'11", 6'7", 7'3") lengths. To determine X:

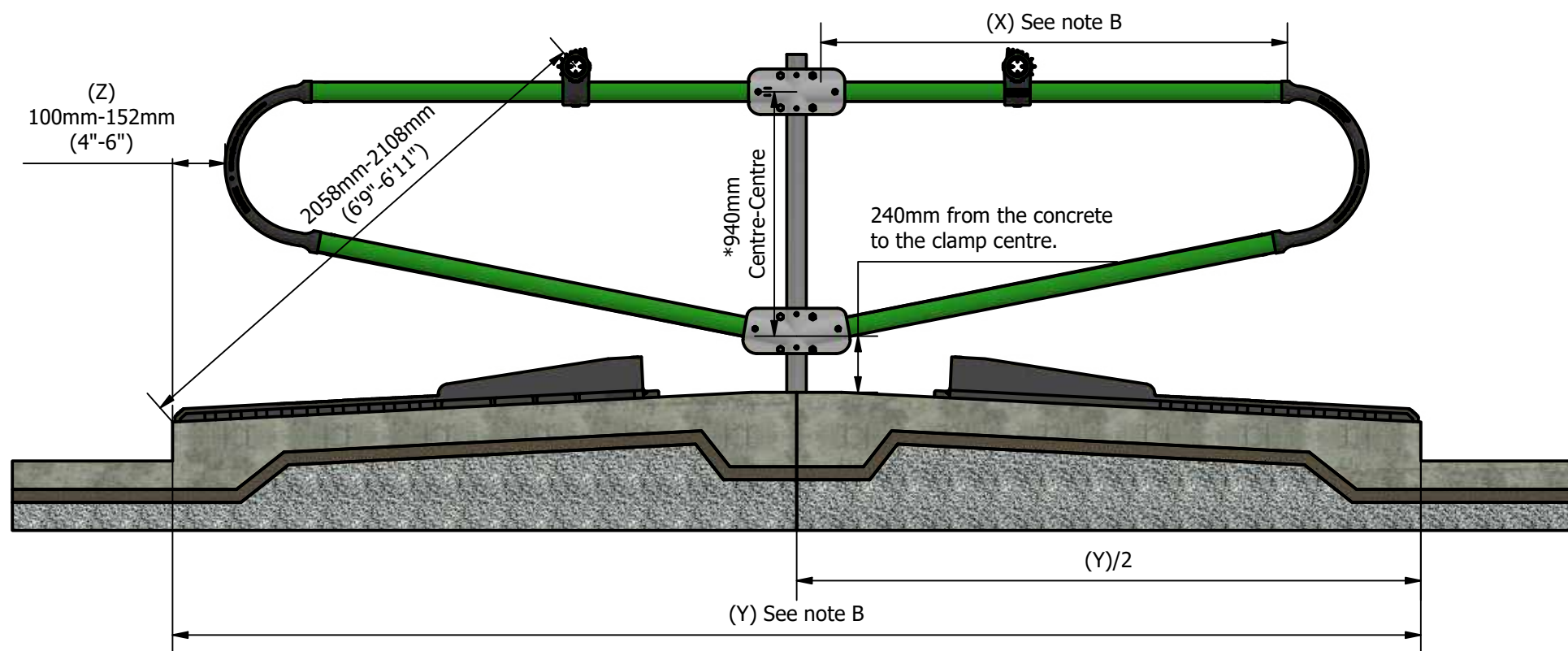
For Cubicle bed lengths (Y) of 4572mm-4877mm (15' - 16') Use 1.8m (5'11") long pipes.

For Cubicle bed lengths (Y) of 4877mm-5182mm (16' - 17') Use 2m (6'7") long pipes.

For Cubicle bed lengths (Y) of 5182mm-5486mm (17' - 18') Use 2.2m (7'3") long pipes.

Note: For bed lengths (Y) in excess of these guidelines, it is recommended to use two single posts back-to-back to achieve the correct cubicle loop to heelstone measurement (Z).

*The 940mm centre to centre measurement between the cubicle clamps is recommended. This can be adjusted for smaller animals.



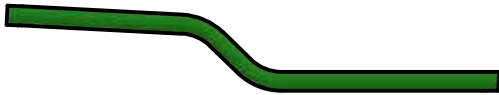
Appendix C

Dream

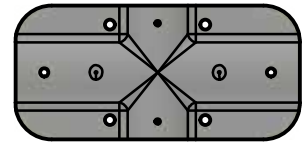
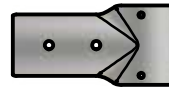
Top Pipe



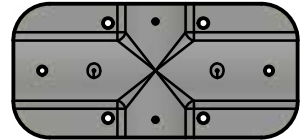
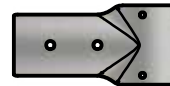
Bottom Pipe



Top Clamp



Bottom Clamp



Siesta

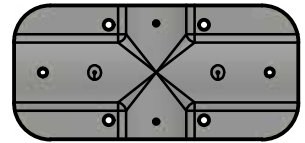
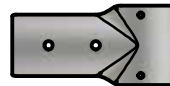
Top Pipe



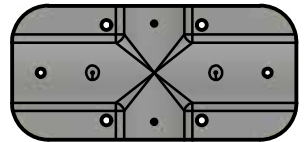
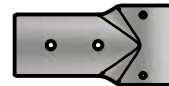
Bottom Pipe



Top Clamp



Bottom Clamp



Calm

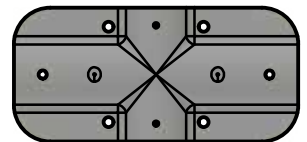
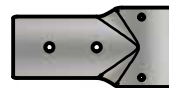
Top Pipe



Bottom Pipe



Top Clamp



Bottom Clamp

