



Beef and Dairy Product Brochure



Welcome to our beef and dairy product brochure

Established in 1996, EASYFIX is a family owned and run company which has enjoyed tremendous growth over the last 25 years. We're hugely passionate about delivering products that meet the needs of our customers and their animals. Our aim is to become the number one provider of livestock comfort solutions in the world and that is why we are committed to developing the best performing and highest quality products in the market.

At EASYFIX, we pride ourselves on developing innovative products which make your animals more comfortable. Looking at the livestock housing and comfort solutions market many of the products are of a traditional style. They are built to last and in years gone by the perceived way of delivering this was to use hard and durable materials. The success of our slat rubber in the beef sector made us realise that there were ways we could help improve comfort levels in the dairy sector also by reimagining what materials would serve the animals best.

This spurred us on to develop an extensive range of cow mattresses and flexible plastic cubicles. To date, over half a million EASYFIX cubicles have been sold around the world helping it live up to its billing as the 'safest and most comfortable cow cubicle in the world'. Our Evolve feed rail system is also a pioneering advancement in innovation. Unlike traditional feed rails, the Evolve has no top rail which extends the animal's reach, allows for increased feed intake and reduces injuries to their neck and back.

If innovation is our passion, animal comfort, welfare and performance are what underpin it. We are strong believers that if you look after your animals, they will look after you. Whether that is housing beef cattle on our slat rubber or dairy cows on our mattresses, we are sure it is an investment which our customers won't regret. We want the animals that use our products to be as comfortable and as happy as possible in their environment so that they can perform to their potential and make the farmer's enterprise as productive as possible.

Farmers around the world are facing increased directives and regulations regarding the need to improve their environmental practices and sustainability of their operations. EASYFIX aim to support farmers with these efforts by providing products which can help them meet the directives and regulations more easily. We are regularly engaging in research initiatives with leading universities to certify the benefits of our products for the environment. This means that farmers can trust in the products they are buying but also, in many cases, qualify for agricultural financial support schemes as a result of the purchase and its environmental friendliness.

Our values of innovation, animal welfare and sustainability are central to our business and we can provide a FREE design service to help you achieve these values too. Our expert team will arrange an on-farm visit to discuss your plans and provide you with a technical design and advisory service.

Our goal is to provide you with the best comfort solutions available in the market for you and your herd.

Best Regards,

Michael Earls
Managing Director

**Over half a million
EASYFIX cubicles
have been sold
around the world
helping it live up
to its billing as
the 'safest and
most comfortable
cow cubicle in the
world.'**



LIVESTOCK HOUSING SOLUTIONS FOR WORLDWIDE MARKETS



EASYFIX AROUND THE WORLD

Australia	Hungary	Russia
Austria	Iceland	Saudi Arabia
Belgium	Indonesia	Scotland
Botswana	Ireland	Serbia
Brazil	Italy	Slovakia
Bulgaria	Japan	Slovenia
Canada	Jordan	South Africa
Croatia	Kenya	Spain
Cyprus	Korea	Sweden
Czech Republic	Latvia	Switzerland
Denmark	Malaysia	Thailand
Egypt	Netherlands	UAE
England	New Zealand	USA
Estonia	Northern Ireland	Vietnam
Finland	Norway	Wales
France	Poland	Zambia
Germany	Portugal	Zimbabwe
Greece	Romania	

CONTENTS

EASYFIX SLAT MATS6

EASYFIX SR Slat Mats.....	8
EASYFIX SDR Slat Mats	9
FAQ	11
Research Trial: Kildalton.....	12
Case Study: Lisbeg Farms.....	13

EASYFIX CUBICLES14

EASYFIX Calm.....	16
EASYFIX Dream	16
EASYFIX Siesta.....	17
EASYFIX Brisket Board	17

EASYFIX CUBICLE MATTING18

EASYFIX Jupiter F.....	20
EASYFIX Neptune	21
EASYFIX Phoenix.....	22
FAQ	23
EASYFIX Spirit.....	24
EASYFIX Libra & Libra i (Interlocking)	25
EASYFIX Saturn and Mercury	26

EASYFIX HIGH-GRIP MATTING28

EASYFIX MG Max 4 and 8.....	30
EASYFIX MG Chevron 8	31
EASYFIX MG Evo	32
EASYFIX MG Action.....	33
EASYFIX SoftFloor.....	34
FAQ	35

EASYFIX FEED AREA36

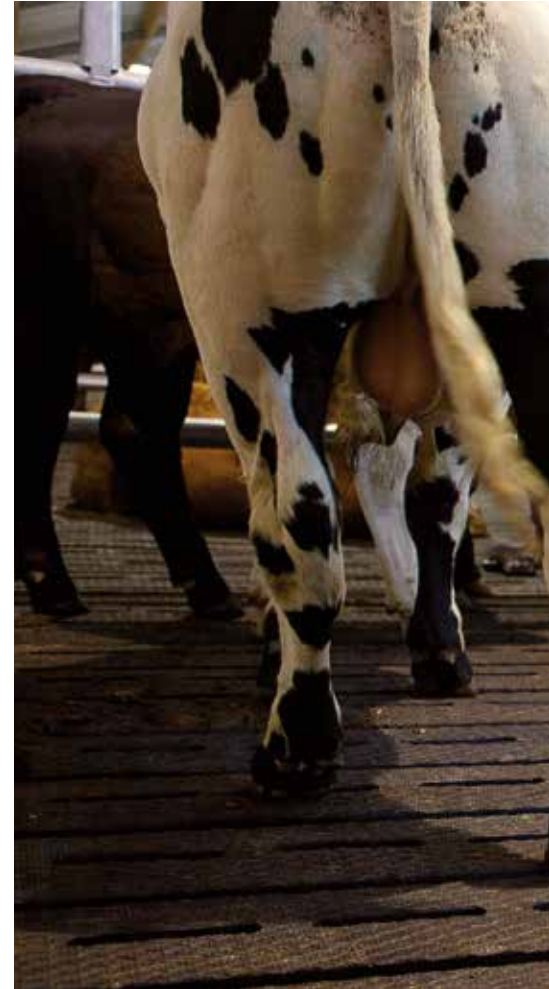
EASYFIX Evolve Feed Fence.....	38
EASYFIX EasyFeeder	39
EASYFIX Silage Pit Bags.....	40

DAIRY HOUSING DESIGN SERVICES42

Guidelines for Dairy Housing Design	42
---	----



EASYFIX **SLAT MATS**



EASYFIX is the number one provider of rubber slat mats in the market. EASYFIX slat rubber is guaranteed to provide a more confident, comfortable and safer surface for animals to move on.

At any given time there are over one million head of animals on EASYFIX slat rubber around the world, highlighting its desirability for farmers for over twenty-five years.

EASYFIX provide two slat rubber options - SR and SDR Slat Rubber. Both of these products are designed to improve the comfort, welfare and performance of animals housed on slats.

Made with a natural rubber compound, EASYFIX Slat Rubber is durable yet provides a comfortable environment which prevents animals getting injured and allows them to thrive to their potential.

> **EASYFIX SR Slat Mat** *pg 8*

> **EASYFIX SDR Slat Mat** *pg 9*



Search '**EASYFIX OFFICIAL**'
on YouTube to find out more

'...suitable for installation
in slatted units.'



What Our Customers Say:

"We bought EASYFIX Slat Rubber and it was a big investment. The mats have really transformed our beef system. The company installed them and they have been a fantastic investment. Growth rates increased by between one quarter and one third of a kilo per day and I put that down to increased comfort."

- Adam Quinney, UK Beef Farmer

EASYFIX SR Slat Mats



The award-winning **EASYFIX SR Slat Mat** system is designed to improve the comfort, welfare and performance of cattle housed on concrete slats.

Our reinforced design has a high-grip profile which provides animals with more traction and confidence which encourages them to get up and move around more.

FEATURES

- Two-strip rubber flooring solution
- Sloped profile for quick urine run-off to increase drainage as well as reduce emissions
- Self-wedge solution (no additional fixation material required)
- No mechanical cutting of the slat

BENEFITS

- High-grip profile
- Reduces lameness
- Increases average daily live weight gain
- Suitable for use with scrapers
- Superior animal grip
- Increases animal comfort and welfare

SUITABLE FOR

- All slatted areas

DIMENSIONS

- All slat sizes catered for

WARRANTY

- 5 years



What Our Customers Say:

"I have found that the cattle spend more time lying down, feet problems and lameness have become a thing of the past and growth rates have improved significantly."

- Chris Bourns, Irish Beef Cattle Producer, Co. Galway, Ireland
(Finishes 1,400 cattle annually on EASYFIX Slat Rubber.)

EASYFIX SDR Slat Mats



EASYFIX SDR Slat Mats are designed to improve the comfort, welfare and performance of cattle housed on concrete slats.

Our SDR rubber has a smooth and sloped profile which aids faster run-off but also provides increased comfort and confidence to the cattle.

FEATURES

- Smooth and sloped profile
- Two strip rubber system
- Sloped profile for quick urine run-off to increase drainage as well as reduce emissions
- Self-wedge solution (no additional fixation material required)
- No mechanical cutting of the slat

BENEFITS

- Reduces ammonia emissions by up to 30%¹ (RAV No. A 1.30)
- Facilitates faster run-off
- Increases animal comfort and welfare
- Reduces lameness
- Increases average daily weight gain

¹ Wageningen University, Holland, 2018

SUITABLE FOR

- All slatted areas

DIMENSIONS

- All slat sizes catered for

WARRANTY

- 5 years



What Our Customers Say:

"Lameness is almost non-existent; we've gone from a level of 10% to around 1%, if even. They've no sores on their knees so are standing up and moving around as they should and thrive is increasing nicely too. It's like a bull hotel!"

- James Murphy, Clongill Farm, Meath, Ireland



FREQUENTLY ASKED QUESTIONS

EASYFIX Slat Mats

What are the main benefits of using EASYFIX Slat Rubber?

The main benefits are:

- Improves animal comfort, welfare and performance.
- Reduces lameness.
- Improves heat detection due to enhanced foothold.
- Enhances grip – the unique surface profile of EASYFIX slat rubber provides animals with a greater foothold and allows for more natural movement and behaviour without fear of injury.

Can off sized slats be catered for?

Yes we can tailor rubber to all slat sizes.

How long will it last?

EASYFIX Slat Rubber comes with a five-year warranty. However, the lifespan of the product is linked to its application. For example; bulls may put the rubber under more duress than sucklers or having to house animals for longer than planned through winter etc.

Can it be used with robotic scrapers?

Yes. EASYFIX slat mats can be used in conjunction with robotic scrapers which have been adjusted accordingly.

Will it wear?

All rubber products be it car tyres or slat mats will wear over time, however EASYFIX use a very high spec. compound and the rate of wear is gradual over a prolonged period of time. Wear is also dependent on other factors such as length of housing period, animal type etc.

Is Slat Rubber a warmer surface for animals to lie on?

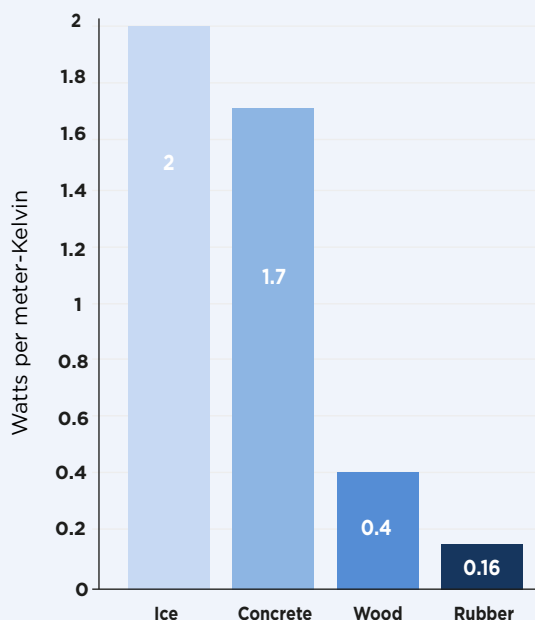
Yes it is. Slat Rubber, like any other rubber, conducts and retains heat which can help insulate animals as they lie on it. The chart opposite shows the thermal conductivity of rubber versus other common surfaces:

What application is suitable for lie back areas with heavy stock?

- MG Max 4
- MG Max 8
- MG Evo

What products are suitable for toe spaces?

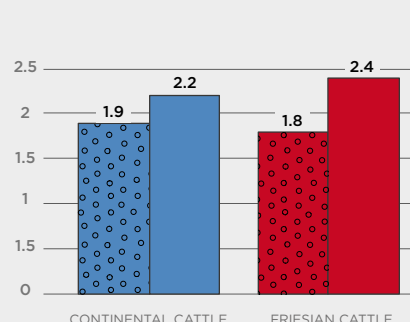
- EASYFIX Action



KILDALTON RESEARCH TRIAL

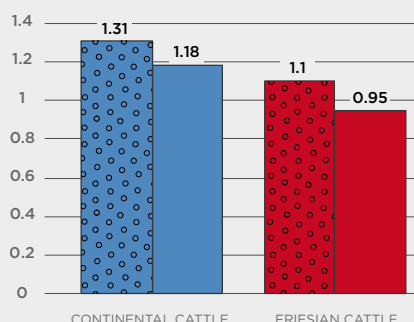
Kildalton Agricultural College is located in Co. Kilkenny, Ireland. A trial was conducted on-farm to determine what the benefits of housing cattle on EASYFIX slat mats versus on concrete slats would be. Several benefits were established:

DIRT SCORE RESULTS



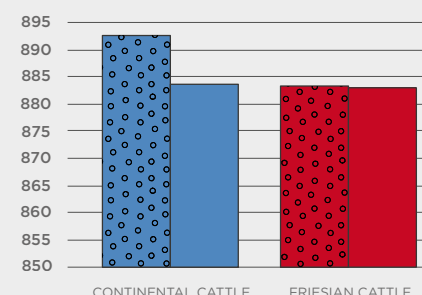
- Continental cattle on EASYFIX slat rubber mats were 0.3 of a dirt score category less than their comrades on bare slats.
- Friesian cattle on EASYFIX slat rubber mats were 0.6 of a dirt score category less than their comrades on bare slats.

ADG RESULTS



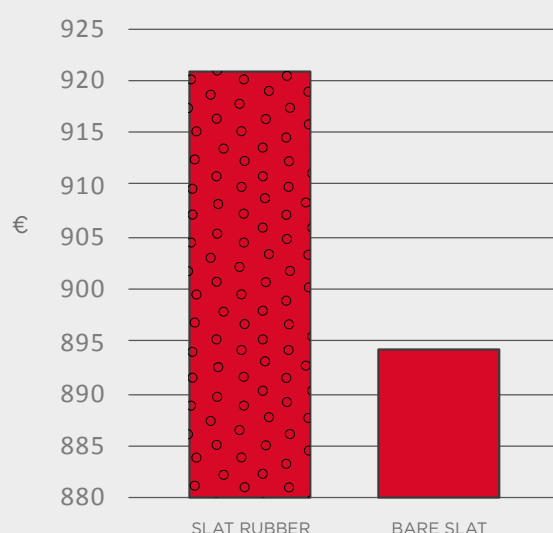
- Continental cattle gained 0.13kgs live weight extra every day on EASYFIX slat rubber mats.
- Friesian cattle gained 0.15kgs live weight extra every day on EASYFIX slat rubber mats.

AVERAGE PEN WEIGHTS



- Continental cattle on EASYFIX slat rubber mats weighed 14.2kgs more than their comrades on bare concrete slats.
- Friesian cattle on EASYFIX slat rubber mats weighed 10.1kgs more than their comrades on bare slats.

PRICE DIFFERENCE & ECONOMIC VIABILITY



EACH FRIESIAN ON EASYFIX SLAT RUBBER MATS MADE ON AVERAGE €37.44 MORE THAN THEIR COMRADES ON BARE CONCRETE SLATS.

ECONOMIC VIABILITY

Are the EASYFIX slat rubber mats economically viable to the finishing beef farmer?

Price Difference/Animal	€37.44/animal
Price Difference/m ² of slat rubber	€17.00/m ²
Cost of slat-mats	€58/m ²
Number of winters required to earn back investment	€58/€17.00 = 3.4

120 Day Winter*

LISBEG FARMS CASE STUDY

The Bourns family finish 1,400 head of cattle annually. For a number of years they had considered installing slat rubber but thought it would be too expensive. However, after experiencing lameness levels of up to 11% they decided to introduce slat mats in one half of their shed. Here are the results they measured:

CHART 1: BEEF PRODUCTION LISBEG FARMS

	HEIFERS	BULLOCKS	BULLS
ADG	12kg	1.3kg	1.45kg
Quantity	290	161	991

01/08/2018 to 31/07/2019

CHART 1 indicates the high ADG that were achieved on Lisbeg Farms over a one-year period in heifers, bullocks and bulls. These figures were obtained following installation of EASYFIX Slat Mats.

CHART 2: BEEF PRODUCTION BEFORE AND AFTER EASYFIX SLAT RUBBER INSTALLATION

	*BEFORE	**AFTER	DIFFERENCE
Average Daily Live Weight Gain	0.7kg/day	1.2kg/day	0.5kg/day
Lameness	11%	0.5%	-10.5%
Days to Beef	150	120	-30

*01/08/2018 to 31/07/2019 – 741 cattle slaughtered **01/08/2019 TO 08/02/2020 – 419 cattle slaughtered

CHART 2 reveals major differences in ADG, percentage lameness and days-to-beef both before and after EASYFIX Slat Mats had been installed. Figures obtained from the 'Before' group are based on a group of 741 animals on concrete slats over a one-year period. Figures obtained from the 'After' group are based on a group of 419 animals over a six-month period.

CHART 3: EASYFIX SLAT RUBBER LIVE WEIGHT GAIN ROI

	0.5KG/DAY	56% KO	@€3.90/KG
100 Day Winter	50kg	28kg	€109.20
120 Day Winter	60kg	33.6kg	€131.04

CHART 3 represents the payback or the economic benefit to Lisbeg Farms over a 100 day and 120-day winter period. With the current price of EASYFIX Rubber at €58 euro per square metre and a stocking density of 2.2 sq metres per animal, the cost per animal of installing rubber is €127.

This means the farmer achieves payback within 2.5 years.

EASYFIX CUBICLES



The revolutionary EASYFIX Cubicle delivers the freedom of the outdoors-indoors and is proven to maximise cow comfort, welfare and performance.

With almost half a million EASYFIX cubicles installed in over 60 countries across the globe it continues to live up to its billing as 'the safest and most comfortable cow cubicle in the world'.

Consisting of flexible plastic pipes as well as rubber loops and neck rail couplings, the EASYFIX cubicle almost feels invisible to the cow. Instead of acting as a barrier between cows the EASYFIX cubicle acts as a guide, moving to the cow's desired position and enhancing their environment. This flexibility means all cow sizes can be catered for while injuries, and their associated costs, are also reduced.

- > **EASYFIX Calm** *pg 16*
- > **EASYFIX Dream** *pg 16*
- > **EASYFIX Siesta** *pg 17*
- > **EASYFIX Brisket Board** *pg 17*



Search '**EASYFIX OFFICIAL**'
on YouTube to find out more

'...the safest and most comfortable
cow cubicle in the world'.



What Our Customers Say:

"They just get up with ease. You can see that stall moving and you just know that they're not getting hurt when they're getting up."

- Jeff Funk, Funk's Midway Dairy, Central Minnesota, USA

EASYFIX **Calm**



EASYFIX Calm is a cubicle system with a straight flexible arm, designed for use in conjunction with a mat or mattress, deep litter beds or sand type systems.

FEATURES

- Flexible plastic pipes, rubber loop and rubber neck rail couplings.
- Fixed and flexible rubber couplings for neck rail.
- Available in red, green and blue.

BENEFITS

- Ideal for use with mat or mattress system, deep litter beds or sand cubicles.
- The profile of the cubicle ensures cows lie in the correct position.
- Reduces soiling of the bed surface.
- Single post mounting system ensures unrestricted lunging space for the cow.

DIMENSIONS

- Pipe lengths can be cut to suit.

EASYFIX **Dream**



EASYFIX Dream is a cubicle system with a two-bend design for use in conjunction with a mat or mattress type system.

FEATURES

- Flexible plastic pipes, rubber loop and rubber neck rail couplings.
- Fixed and flexible rubber couplings for neck rail.
- Available in red, green and blue.

BENEFITS

- Ideal for use with mat or mattress system.
- The profile of the cubicle ensures cows lie in the correct position.
- Reduces soiling of the bed surface.
- Single post mounting system ensures unrestricted lunging space for the cow.

DIMENSIONS

- Pipe lengths can be cut to suit.

EASYFIX **Siesta**



EASYFIX Siesta is a cubicle system with a single bend design for use in conjunction with sand based or deep bed systems.

FEATURES

- Flexible plastic pipes, rubber loop and rubber neck rail couplings.
- Fixed and flexible rubber couplings for neck rail.
- Available in red, green and blue.

BENEFITS

- Ideal for use with deep litter beds or sand based systems.
- The profile of the cubicle ensures cows lie in the correct position.
- Reduces soiling of the bed surface.
- Single post mounting system ensures unrestricted lunging space for the cow.

DIMENSIONS

- Pipe lengths can be cut to suit.

EASYFIX **Brisket Board**



EASYFIX Brisket Board is ideal for use in new and existing cubicle housing. The brisket board is designed to position the cow correctly when lying in the cubicle bed and prevent the cow lying too far forward, which can lead to soiling on the cubicle bed.

FEATURES

- Durable plastic material.
- Curved design with no sharp edges.
- Pre-drilled holes allow for easy installation.

BENEFITS

- Positions the cow correctly when lying in the cubicle bed.
- Prevents the cow lying too far forward.
- Reduces soiling on the cubicle bed.
- Designed to support the cow's weight and allows her to extend her leg forward and rest in a natural position.

SUITABLE FOR

- Use with cow cubicles.

DIMENSIONS

- 1200mm (w) x 155mm (h) x 260mm (d) (4' x 4" x 6")

EASYFIX CUBICLE MATTING



EASYFIX cow mattresses offer the best comfort available to cows in the market.

From our award-winning Jupiter F mattress with a world-first built-in brisket board to our Spirit 'sandsaver' mat we have a solution for every farming system.

All of our mattresses are made with a natural rubber compound which provides the perfect balance of comfort and durability which leads to longer lying times and increased milk production.

- > **EASYFIX Jupiter F** *pg 20*
- > **EASYFIX Neptune** *pg 21*
- > **EASYFIX Phoenix** *pg 22*
- > **EASYFIX Spirit** *pg 24*
- > **EASYFIX Libra & Libra i** *pg 25*
- > **EASYFIX Saturn & Mercury** *pg 26*



Search '**EASYFIX OFFICIAL**'
on YouTube to find out more

'...ensures optimum positioning of the cow when lying in the cubicle.'



What Our Customers Say:

"Since installing the EASYFIX cubicles and Neptune mattresses the cows have yielded 2,500 litres extra. We've gone from 9,000 litres annually up to almost 11,500 litres a year."

- Mark & Caroline Davies, Pembrokeshire, Wales

EASYFIX **Jupiter F**



The **EASYFIX Jupiter F** is a top of the range cow mattress with a truly unique and innovative design. The mattress incorporates an integrated brisket board at the front and pillow on two sides. This unique feature is a 'world first' and ensures optimum positioning of the cow when lying in the cow cubicle.

FEATURES

- Natural rubber compound
- 45mm layer of memory foam consisting of 50% polyurethane and 50% latex materials
- Memory foam enclosed in a 500-micron sealed wrapper
- Sloped non-abrasive profile at the rear
- Hidden interlock creates a seamless finish

BENEFITS

- Unique built-in brisket board ensures a comfortable lying position for cows in the cubicle bed
- Cows can stretch their front legs for maximum comfort
- Increases cow comfort, welfare and hygiene
- Higher daily milk yields
- Suitable for DIY installation and all cubicle sizes
- Spacers available to adjust the width.

SUITABLE FOR

- Use with all cow cubicles

DIMENSIONS

- 1195mm (w) x 1930mm (l) x 100-60mm (d) (47 1/2" x 76" x 2 3/8" - 4")
- Also available in 45" wide (1143mm)

WARRANTY

- 10 years

DLG DEFLECTION READING

- 33.6mm



What Our Customers Say:

"I have no regrets of putting in the EASYFIX Jupiter mattresses and the Dream stalls. If we were to consider another barn in the future, it would definitely be our choice again."

- Tim Kerfeld, Minnesota, USA

EASYFIX Neptune



The **EASYFIX Neptune** is a cow mattress that offers a superior level of cow comfort.

The mattress has a 50mm layer of foam, interlocks on two sides and has a sloped profile at the rear to help keep the mattress clean. The cow's natural resting position is supported by the soft lying area within the centre of the mat.

FEATURES

- Natural rubber compound
- Interlocking on two sides
- 50mm layer of memory foam consisting of 50% polyurethane and 50% latex materials
- Memory foam enclosed in a 500-micron sealed wrapper
- Sloped non-abrasive profile at the rear

BENEFITS

- Increases cow comfort and welfare
- Higher daily milk yields
- Open cell technology of the foam provides excellent comfort, durability and firmness
- Suitable for DIY installation & all cubicle sizes
- Spacers available to adjust the width

SUITABLE FOR

- Use with all cow cubicles

DIMENSIONS

- 1125mm (w) x 1750mm (l) x 62mm (d) (44 3/8" x 72" x 2 1/2")

WARRANTY

- 10 years

DLG DEFLECTION READING

- 33mm



What Our Customers Say:

"We're very pleased with the level of cow comfort achieved. We've seen increased lying times, milk yields and reduced lameness."

- Nick Eccles, Lancashire, UK

EASYFIX **Phoenix**



EASYFIX Phoenix is a cubicle mattress offering an excellent level of cow comfort. The natural resting position of the cow is supported by the soft lying area within the mat.

The cubicle mattress has a 25mm layer of foam and is interlocking on two sides with a sloped profile at the rear edge to help keep the mattress clean.

FEATURES

- Natural rubber compound
- Interlocking on two sides
- 25mm layer of memory foam consisting of 50% polyurethane and 50% latex materials
- Memory foam enclosed in a 500-micron sealed wrapper
- Sloped non-abrasive profile at the rear.

BENEFITS

- Increases cow comfort and welfare
- Higher daily milk yields
- Open cell technology of the foam provides excellent comfort, durability and firmness
- Suitable for DIY installation
- Spacers available to adjust the width.

SUITABLE FOR

- Use with all cow cubicles

DIMENSIONS

- 1125mm (w) x 1750mm (l) x 37mm (d) (44 3/8" x 68 7/8" x 1 1/2")

WARRANTY

- 10 years

DLG DEFLECTION READING

- 22mm



What Our Customers Say:

"The mattresses are easy to clean - because of the nice precise edges on them it meant that we could get them nice and flush with the concrete step between the cubicle rows. This means there are no little gaps for muck to lodge in and lift the interlocking rubber mats."

- Mervyn Stanley, Co. Offaly, Ireland

FREQUENTLY ASKED QUESTIONS

EASYFIX Mattresses

1. Why buy a mattress over a cheaper rubber mat?

Cows can lie for up to 14 hours per day – the more comfortable you make the cubicle the longer they will lie. Cows produce 5 times more milk lying down versus standing.

2. What makes the EASYFIX mattresses a superior mattress choice?

- **Top Cover** – Top-skin thickness is a very important aspect of a mattress: EASYFIX mattresses' top-skin thicknesses are as follows:
 - Jupiter F - 12mm
 - Neptune - 10mm
 - Phoenix - 10mm
- Most continuous mattress roll systems have a top-skin thickness of between 3mm to 6mm.
- **Foam Mattress** – Not only do EASYFIX mattresses have a greater top-skin thickness than most competing mats, they also have foam mattresses underneath. EASYFIX mattresses contain the following depths of foam:
 - Jupiter F - 45mm
 - Neptune - 50mm
 - Phoenix - 25mm
- These foam mattresses consist of 50% latex and 50% polyurethane and are encased in a 500-micron sealed wrapper which prevents moisture from seeping in. Tests conclude that our latex is certified to only lose 2% elasticity over a 10-year period. Competitors, if they know, will typically use 80:20 latex/polyurethane split as this is a cheaper option and the memory and elasticity of the latex will deteriorate over a shorter period of time.
- **Interlocking System** – The EASYFIX Jupiter F, Neptune and Phoenix mattresses can all interlock which seals the joint and prevents any bedding or moisture getting into the joint.
- **Brisket Board** – The Jupiter F Mattress has a world's first built-in brisket board. This unique feature prevents the cow from laying too far forward, while the 'pillows' on the side help to keep the cows straight in the bed. Keeping the cows in the correct position helps to ensure that the beds stay clean which helps save on labour and associated costs.

3. Do the mattresses prevent hock damage?

EASYFIX have designed a top-surface finish to their mattresses which provides a great level of grip but that is also non-abrasive to cows' hocks. This is the opposite to canvas type mattress surfaces that can cause hock damage which has implications for herd health and, in particular, fertility.

4. How can I test for comfort?

The EASYFIX Jupiter F mattress has a DLG deflection reading of 33.6mm (1.32"), the Neptune mattress has a 33mm (1.3") reading, while the Phoenix mattress has a reading of 22mm (0.86").

Cows typically transfer 70% of their bodyweight to their two front knees and free fall 18-24" to the mattress when lying down. To get an idea of the cushioning effect cows enjoy on EASYFIX mattresses you can do the simple 'knee test' to test for comfort. Simply drop to your knees onto the mattress top and observe the deflection of the mat around the impacted area.

5. How do you clean the mattress?

EASYFIX mattresses have a smooth and sloped area at the rear of the mat which aids run-off and ease of cleaning. Additionally, hand-scrapers, brushes or mechanically propelled cubicle bedders can be used.

6. Can you use lime or other absorbent material with them?

It is recommended with all cubicle mat or mattress systems to use a bedding material such as saw dust or lime. This will absorb any liquid run off, ensure beds remain dry and material with antibacterial agents or lime will ensure bacteria growth is lowered and therefore keep SCC low and prevent mastitis.

EASYFIX **Spirit**



EASYFIX Spirit has honeycomb shaped compartments to maximise the distribution of sand in deep bed cubicle systems. The sloped profile towards the front allows the cows to lower and rise with ease.

FEATURES

- Honeycomb shaped compartments
- Sloped profile towards the front of the mat allows greater depth of sand
- Natural rubber compound
- Semi-closed cells to ensure the mat stays in position.

BENEFITS

- Reduces sand use by 20%-40%
- Maximises the distribution of sand in deep cubicle beds
- Ideal for use with sand or organic bedding materials
- Suitable for DIY installation
- Suitable for use with sand rakes/groomers
- No maintenance required.

DIMENSIONS

- 1150mm (w) x 1400mm (l) x 30-100mm (d) (45 3/8" x 55 1/8" x 2-4")

WARRANTY

- 5 years

SUITABLE FOR

- Use with all cow cubicles

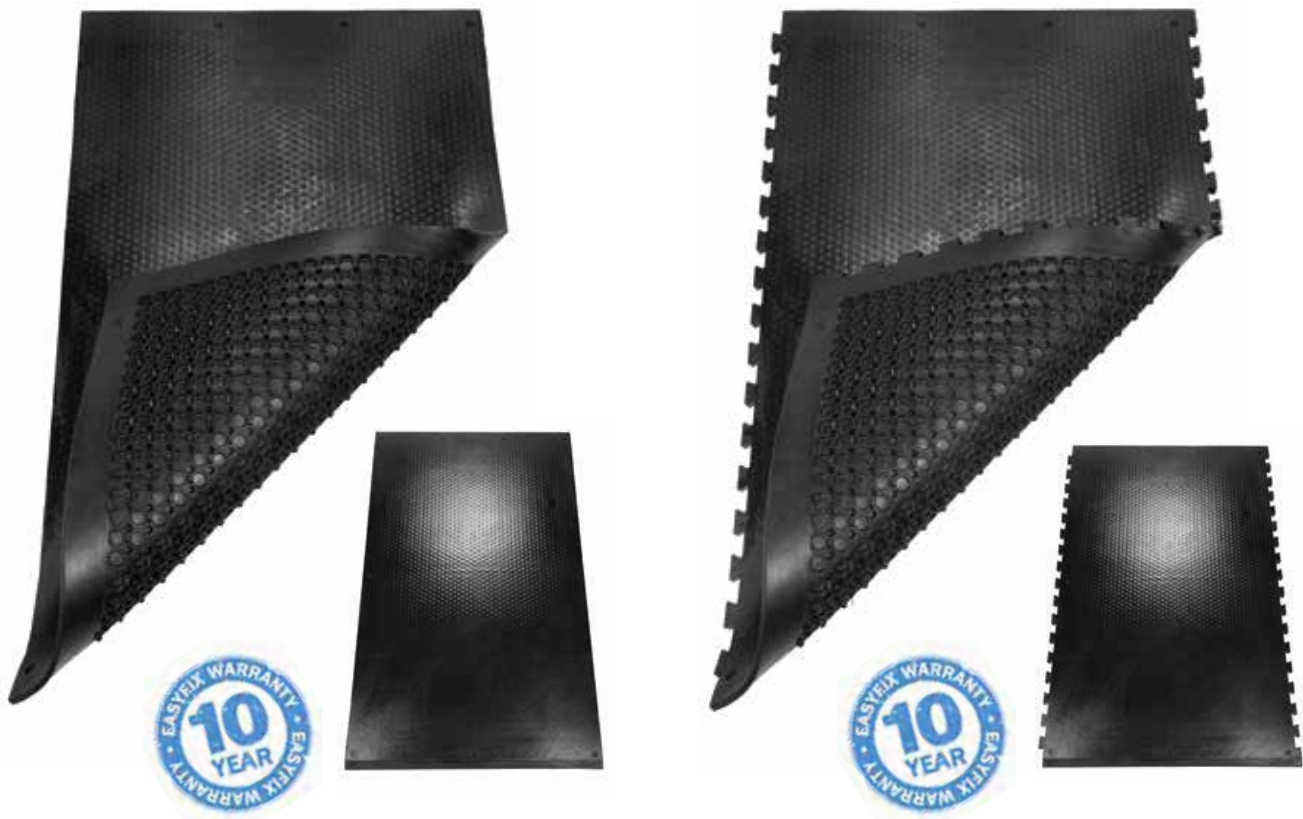


What Our Customers Say:

"We used sand beds over stone for the last twenty years and we found over time that we were getting some hard bits in the sand and that did lead to some hock damage. So to alleviate that we've used the Spirit sandsavers. We wanted a 20% reduction in the sand used and that is what we've achieved. We're looking at a two and a half year payback and we've reduced lameness by 50%."

Simon Ward, Cornwall, UK

EASYFIX **Libra & Libra i** *(Interlocking)*



EASYFIX Libra is a straight edge cubicle mat with the **Libra i** being the interlocking version of the same mat. These mats provide cow comfort at a competitive price and are suitable for both dairy and suckler cows.

FEATURES

- Honeycomb and stud profile on the underside
- Available with straight or interlocking edges
- Natural rubber compound
- Sloped profile at the rear

BENEFITS

- Good level of cow comfort
- Higher daily milk yields
- Suitable for DIY installation
- Easy to clean top surface

SUITABLE FOR

- Use with all cow cubicles

DIMENSIONS

- 1150mm (w) x 1750mm (l) x 23mm (d) (45 1/4" x 68 7/8" x 7/8")

WARRANTY

- 10 years

DLG DEFLECTION READING

- 11.3mm

EASYFIX **Saturn and Mercury**



EASYFIX Saturn and Mercury mats provide a good level of comfort and are ideal for sucklers, dry cows and heifers. The Saturn mat is three inches wider than the Mercury mat.

FEATURES

- Stud profile on the underside
- Natural rubber compound
- Available with straight edges

BENEFITS

- Studded profile underneath for additional comfort
- Easy clean non-abrasive surface
- Suitable for DIY installation

SUITABLE FOR

- Use with all cow cubicles

DIMENSIONS

Saturn

- 1230mm (w) x 1830mm (l)
x 17mm (d) (48" x 72" x 5/8")

Mercury

- 1140mm (w) x 1830mm (l)
x 17mm (d) (45" x 72" x 5/8")

WARRANTY

- 3 years

DLG DEFLECTION READING

- 4.5mm



EASYFIX **HIGH-GRIP MATTING**



There are many areas of a farm which can benefit from the installation of rubber matting. The constant impact of hard surfaces which cows can come into contact with every day can gradually wear down and injure their hooves and joints.

At EASYFIX, we believe these injuries are easily avoidable and for that reason we produce a range of matting solutions for various applications around the farm. From rubber matting at the feed rail to matting for cows backing-off a rotary milking machine, we have a rubber matting solution for every area of the farm which can improve your animals' welfare and save you money on veterinary bills.



Search '**EASYFIX OFFICIAL**'
on YouTube to find out more

- > **EASYFIX MG Max 4 and 8** *pg 30*
- > **EASYFIX MG Chevron 8** *pg 31*
- > **EASYFIX MG Evo** *pg 32*
- > **EASYFIX MG Action** *pg 33*
- > **EASYFIX SoftFloor** *pg 34*

'...we have a rubber matting solution for every area of the farm'

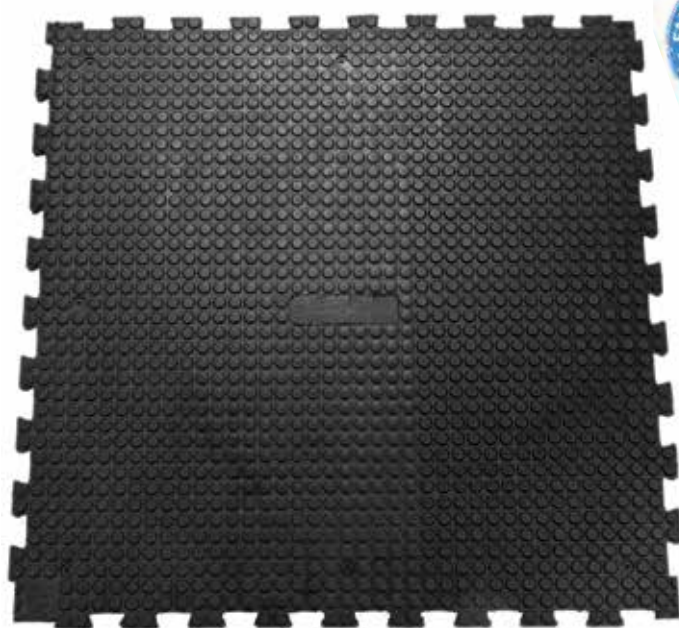


What Our Customers Say:

"The Action mats have been a great addition. We've the Action mats at the feed rail and cross-overs and they're both performing very well. They're much more confident walking on the rubber and they head away for milking much quicker and calmer."

- John Waters, Co. Kildare, Ireland

EASYFIX **MG Max 4 and 8**



EASYFIX MG Max 4 and 8 matting has a 'penny' high grip surface and is ideal for use in milking parlours, walkways and collecting yards. The MG Max 8 mat can be used in areas with higher traffic than where MG Max 4 matting would be installed.

The rubber mats provide a comfortable and confident walking and standing surface for cattle.

FEATURES

- Natural rubber compound
- 'Penny' grip design on both sides so the mats can be inverted
- Strong interlock on four sides
- Recessed holes around the edges facilitate stainless steel fixings

BENEFITS

- Provides cows with maximum grip and confidence
- Facilitates faster movement of animals
- Can be recessed into the concrete in new builds
- Easy to clean with water or brush scraper
- Very easy to install

SUITABLE FOR

Beef:

- Lie Back
- Calving Area
- Feed Lane

Dairy:

- Milking Parlour
- Collecting Yard
- Feed Lane
- Calving Area
- Walkway

DIMENSIONS

- 1000mm (w) x 1000mm (l)
x 22mm (d) (39 3/8" x 39 3/8"
x 7/8")

WARRANTY

- 5 years

EASYFIX **MG Chevron 8**



The **EASYFIX MG Chevron 8** mat has a 'penny' high grip surface with added chevrons for maximum foothold. It also has a penny profile on the underside of the mat which provides extra comfort but also allows water to flow freely and prevent stagnation.

FEATURES

- Natural rubber compound
- Interlocking on four sides
- 'Penny' grip profile underneath for drainage
- Not suitable for use with automatic scrapers

BENEFITS

- 'Penny' high grip surface with chevrons for maximum foothold
- 'Penny' profile on the underside for extra comfort
- Can be cleaned with a pressure washer or water hose

SUITABLE FOR

Beef:

- Lie Back
- Calving Area

Dairy:

- Milking Parlour
- Collecting Yard
- Calving Area
- Walkway

DIMENSIONS

- 1000mm (w) x 1000mm (l) x 22mm (d) (39 3/8" x 39 3/8" x 7/8")

WARRANTY

- 5 years

EASYFIX **MG Evo**



MG Evo Stud underside



EASYFIX MG Evo has a 'hexagonal' high-grip surface and is available with **both flat and studded undersides**.

The flat version is suitable for under heavy traffic while the studded version provides an extra degree of comfort and shock absorption. The rubber mats provide a comfortable and confident walking surface, helping to reduce lameness and the associated veterinary costs.

FEATURES

- Natural rubber compound
- 'Hexagonal' high grip profile
- Available with either solid or stud base
- Strong interlock on four sides
- Recessed holes around the edges facilitate stainless steel fixings

BENEFITS

- Provides cows with maximum grip and confidence
- Better locomotion and more natural gait
- Facilitates faster movement of animals
- Reduces lameness and associated veterinary costs
- Easy to clean with water or brush scraper
- Very easy to install

SUITABLE FOR

Beef:

- Lie Back
- Calving Area
- Feed Lane

Dairy:

- Milking Parlour
- Collecting Yard
- Feed Lane
- Calving Area
- Walkway

DIMENSIONS

- 1150mm (w) x 1770mm (l)
x 24mm (d) (45 1/4" x 69 5/8"
x 1")

WARRANTY

- 5 years

EASYFIX **MG Action**



EASYFIX MG Action is a high grip rubber mat available in four widths (1', 2', 3' & 4') and is ideal for installation under high volume and heavy stock.

The rubber mats provide a cushioned standing surface at the feed face resulting in higher feed intake and increased productivity.

FEATURES

- Natural rubber compound
- 'Penny' grip on underside so that mats can be inverted
- Strong interlock on two sides
- Recessed holes around the edges facilitate stainless steel fixings

BENEFITS

- Provides animals with maximum grip and confidence
- Very easy to install
- Easy to clean with water or brush scraper

SUITABLE FOR

Beef:

- Lie Back
- Calving Area
- Feed Lane

Dairy:

- Milking Parlour
- Collecting Yard
- Feed Lane
- Calving Area
- Walkway

DIMENSIONS

MG Action 1

- 2235mm (l) x 305mm (w) x 18mm (d) (88" x 12" x 3/4")

MG Action 2

- 2235mm (l) x 610mm (w) x 18mm (d) (88" x 24" x 3/4")

MG Action 3

- 2235mm (l) x 915mm (w) x 18mm (d) (88" x 36" x 3/4")

MG Action 4

- 2235mm (l) x 1220mm (w) x 18mm (d) (88" x 48" x 3/4")

WARRANTY

- 5 years

EASYFIX **SoftFloor**



EASYFIX SoftFloor is a high-grip parlour floor covering made from EVA material. It reduces fatigue and offers increased comfort for operators in the parlour pit.

FEATURES

- High grip surface
- EVA material
- Interlocking on four sides
- Available in blue/green and blue/red

BENEFITS

- Excellent anti-fatigue properties
- Resistant to milking machine acids
- Reduces stray voltage
- Very easy to install

SUITABLE FOR

- Milking Parlour Pits

DIMENSIONS

- 1000mm (w) x 1000mm (l) x 22mm (d) (39 3/8" x 39 3/8" x 7/8")

WARRANTY

- 5 years



What Our Customers Say:

"I have no problem spending time in the parlour now – it's the only place on the dairy farm, where the cow is making you money."

- Michael Gowing, Co Offaly, Ireland

FREQUENTLY ASKED QUESTIONS

EASYFIX Parlour Matting

1. Why should I install rubber in the milking parlour?

Rubber in the milking parlour can deliver many benefits for both the farmer and the cow. Milking times are reduced, cow flow increases, cows don't slip and get hurt and they come into the parlour better. How is this possible? The average gait length for a cow on concrete is 600mm, grass is 800mm and rubber is also 800mm. This more natural movement and increased step length will move cows through the system at a faster pace.

Milk let down by cows is also improved through standing on a comfortable rubber surface versus hard, cold concrete as cows feel more relaxed. Cows also come forward to the parlour easier as cows will opt to stand on rubber near the parlour entrance as opposed to concrete in the collecting yard.

All parlour designs usually require sharp turns by cows. Typical herringbone parlours will have 90 degree turns, rotary platforms require a 180 degree turn etc. Anywhere you ask a cow to turn, it puts pressure on the claw. This is a main source of claw damage leading to digital dermatitis or white line lameness. This is caused from the abrasive nature of concrete, whereas rubber provides a cushioned surface.

2. Is it easy to clean?

Cleaning time should be similar to concrete floors, all EASYFIX rubber is designed to withstand cleaning chemicals etc.

3. Does it help cows move through the parlour more quickly?

Yes it does. A research trial conducted by Kingston Maurward College in the UK found that after installing rubber in the parlour the average milking time per cow was reduced by 27 seconds in the morning and 6 seconds in the evening.

4. How long will it last?

With any rubber flooring it is vital to ensure that the correct mat is used in the correct area and understanding the volume of cows that are being milked will determine how long a product will last. Consider the traffic from a 1,000-cow herd milked three times a day versus a 100-cow herd milked twice a day – 1.1m cow passes vs. 73,000 cow passes per annum. EASYFIX strives to develop products that are durable and deliver value for money for customers. On average EASYFIX products should last 15+ years depending on application and traffic levels. **Note: If you are unsure about what product best suits your needs please contact a member of the EASYFIX product support team.**

5. What mats are available for milking parlours and collecting yards?

EASYFIX MG Max 4 / EASYFIX MG Max 8 / EASYFIX Evo / EASYFIX Motion / MG Chevron 8.

6. Do the EASYFIX Evo dimensions include the interlock?

Yes, they include the interlock.

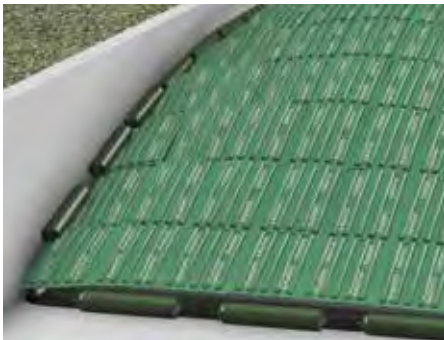
7. How do you recommend cleaning the parlour matting?

The matting is cleaned in exactly the same way as a normal concrete floor. Chemicals and cleaning agents will not affect the mat.

8. What mats should you install in the parlour pit?

EASYFIX SoftFloor is a high grip floor covering that reduces fatigue and offers a good level of comfort for operators in the parlour pit. The EVA mat measures 1m x 1m x 22mm and is interlocking on four sides.

EASYFIX **FEED AREA**



On average, cows can spend up to 6 hours (25%) of their day eating. It is a hugely important part of their day and that is why it is important that their eating environment is as pleasant and easily accessible as possible.

That's why EASYFIX have developed a range of feeding area products which are designed to do just that. From the reach our award-winning EASYFIX Evolve feed rail provides to the feed accessibility cows enjoy from our EasyFeeder, our products help make cows' eating environments as natural as possible ensuring increased comfort, weight-gain and productivity.



Search '**EASYFIX OFFICIAL**'
on YouTube to find out more

- > **EASYFIX Evolve Feed Fence** *pg 38*
- > **EASYFIX EasyFeeder** *pg 39*
- > **EASYFIX Silage Pit Bags** *pg 40*

'...it is important that their eating environment is as pleasant and easily accessible as possible'



What Our Customers Say:

"Since we installed the EASYFIX Evolve feed system, the results have been fantastic. Feed intakes have increased by at least 1.5 kg per cow per day resulting in higher milk yields.

The feeding system is very good for the cows overall welfare. Nothing is restricting the cow's movement, therefore making it very inviting for the cows to eat and the design ensures cows have no marks on their necks"

Mathew Smith, Lower Castle Hayes Farm, UK

EASYFIX **Evolve Feed Fence**



The **EASYFIX Evolve** is a pioneering advancement in animal feed systems that helps optimise animal welfare and performance.

The Evolve is a feed fence system designed to extend the animal's reach, allow for increased feed intake and reduce injuries to the animal.

FEATURES

- Open-top fence - no top rail like traditional fences have
- Galvanized steel frame with curved plastic divisions
- Flexible plastic pipes that shape to the animal's body
- Modular system
- Available in red, green and blue

BENEFITS

- Open-top system allows essential head movements and more natural feeding behaviour
- Increases feed intake by up to 10% due to the increased reach of animals
- Reduces cows pulling in feed by up to 95% when compared with metal barriers
- Eliminates injuries and marks traditionally associated with steel alternatives
- Allows for safe access and egress for farmers

DIMENSIONS

- Modular sections can be adjusted to any size required

WARRANTY

- 5 years



What Our Customers Say:

"Feed intakes are up by between 8 and 10% thanks to the Evolve. The cows can reach the feed much easier and can stand in comfort without obstruction when chewing. The increased feed intakes and lying times help the cows produce as much milk as possible. We've seen a 10% jump in milk solids and a 2 litre per cow, per day milk yield increase already."

- John Waters, Co. Kildare, Ireland

EASYFIX **EasyFeeder**



The **EASYFIX EasyFeeder** is an interlocking plastic trough system for feed lanes.

The moulded, non-toxic and shatterproof plastic has a smooth, raised and sloped plastic surface. It is suitable for use with all diet feeders and mixer wagons.

FEATURES

- Interlocking plastic feed trough system
- Sections can be interlocked to give the required length
- Adjustable width to suit feeding needs
- Caps at the top for filling with water and release plugs at the bottom
- Moulded fork lift points
- Lightweight shatterproof plastic

BENEFITS

- Reduces feed waste and labour
- Increases feed intake
- Reduces contamination from birds and rodents
- Feed always remains in front of the animal
- Suitable for use with all diet feeders and mixer wagons

DIMENSIONS

- 1570mm (l) x 650mm (h) x 650mm (d) (61 3/4" x 25 5/8" x 25 5/8")

WARRANTY

- 5 years

EASYFIX Silage Pit Bags



The **EASYFIX Silage Pit Bags** are an environmentally friendly alternative for covering the base layer of polythene on silage or maize pits.

The bags have handles for easy transport but enjoy enough weight so that they eliminate air pockets forming, which helps reduce spoilage and associated costs such as loss and removal of feed.

FEATURES

- Corrugated style with individually stitched compartments
- Cover a larger area than tyres
- Four handles for ease of transport
- Green in colour

BENEFITS

- Environmentally friendly - certified to be free from toxins, bacteria, yeasts and moulds
- Reduces waste and spoilage
- Labour saving
- Fast return on investment
- Easily transportable

TECHNICAL DETAILS

Dimensions:

- 1225mm (w) x 1825mm (l)

Weight:

- 30kg

WARRANTY

- 5 years

SUITABLE FOR

- Silage and maize pits



What Our Customers Say:

"The EASYFIX Silage Pit Bags have made covering the pit much easier. They're cleaner than tyres so when using the pit during winter months the bags are easier and quicker to handle and can be stacked neatly on a pallet for storage. Each bag gives an even coverage which gets rid of air pockets which helps reduce waste."

- Cathal and Des McHugh, Co. Roscommon, Ireland



DAIRY HOUSING DESIGN SERVICE

**WE PROVIDE A FREE DESIGN SERVICE FOR MADE-TO-MEASURE
DAIRY CUBICLE HOUSING SYSTEMS.**

HERE ARE SOME OF THE KEY GUIDELINES WE ADHERE TO:

1. WIDTH OF CUBICLES

Selecting the optimum cubicle width when designing a new cubicle house is vital. However, choosing this width will depend on cow size and type. Speak with an EASYFIX representative who will be able to advise you on what width will best suit your herd.

2. LENGTH OF SINGLE CUBICLE BEDS

The recommended length for single cubicle beds is 8ft/2.4 metres at a minimum. This length will even allow very large Holstein cows enough room to rise and lunge forward in the bed when lying down and getting up. When old dairy cubicle houses are being retrofitted this is not always achievable, but certainly in new builds this measurement should be the target.

3. LENGTH OF HEAD-TO-HEAD CUBICLE BEDS

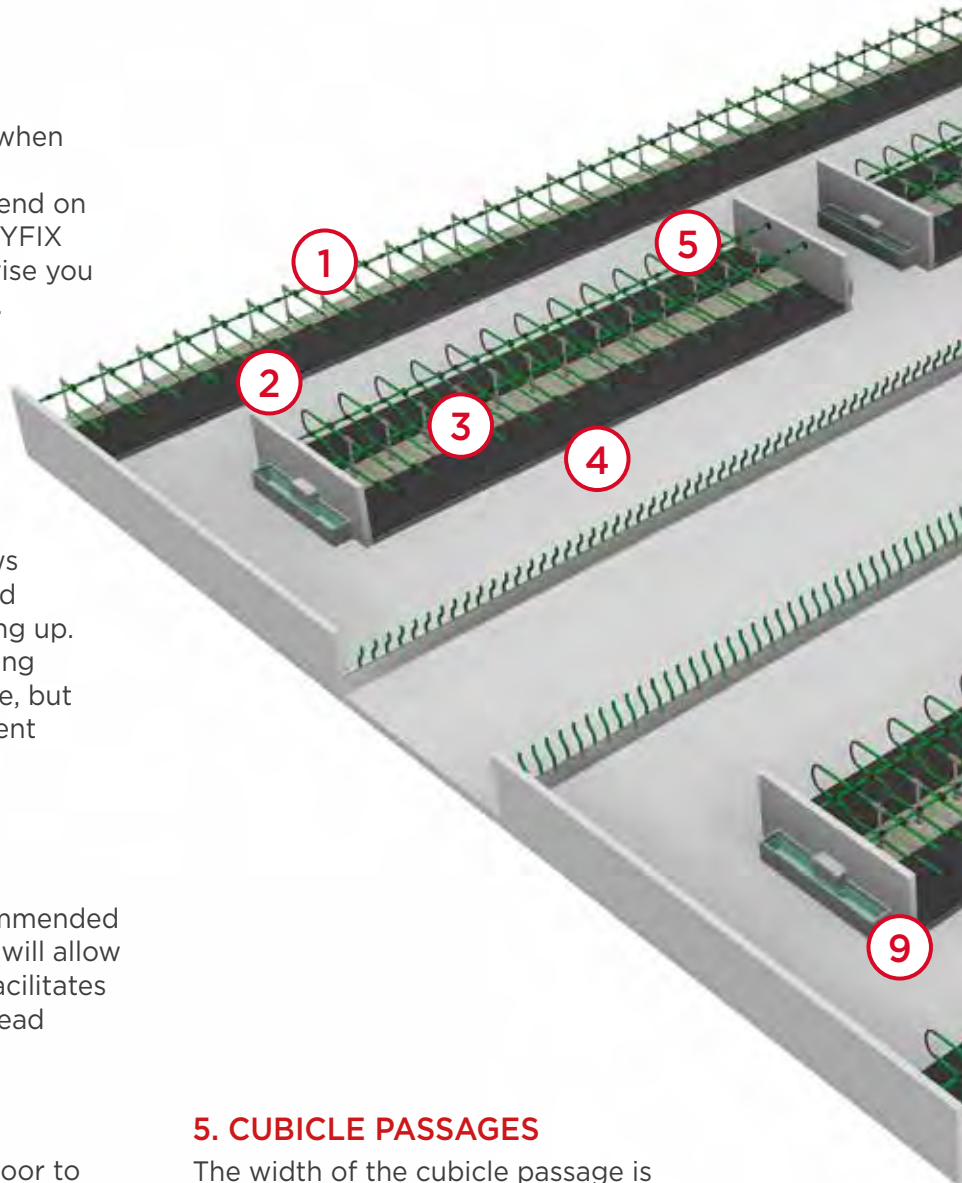
15ft/4.57 metres is the minimum recommended length for head-to-head cubicles; this will allow cows sufficient lunging room. It also facilitates the use of one post for two head-to-head cubicles in the EASYFIX system.

4. CUBICLE STEP UP

The recommended step up from the floor to the top of the mat should be 7"/178mm to 8"/203mm at a minimum. This height will help to maintain cleaner cubicle beds as it allows the effluent in the channel to be spread over a larger surface area. 5 or 6 inches is definitely too low.

5. CUBICLE PASSAGES

The width of the cubicle passage is recommended at a minimum of 10ft/3 metres. If the cubicle passage is any narrower it will impede and restrict the movement of cows as they leave adjacent cubicle beds. Depending on the cleaning mechanism in the shed, it can also lead to the channel between the cubicles filling up very quickly and the cows dragging the effluent up onto the cubicle bed.



6. HEAD SPACE AT THE FEEDING FACE

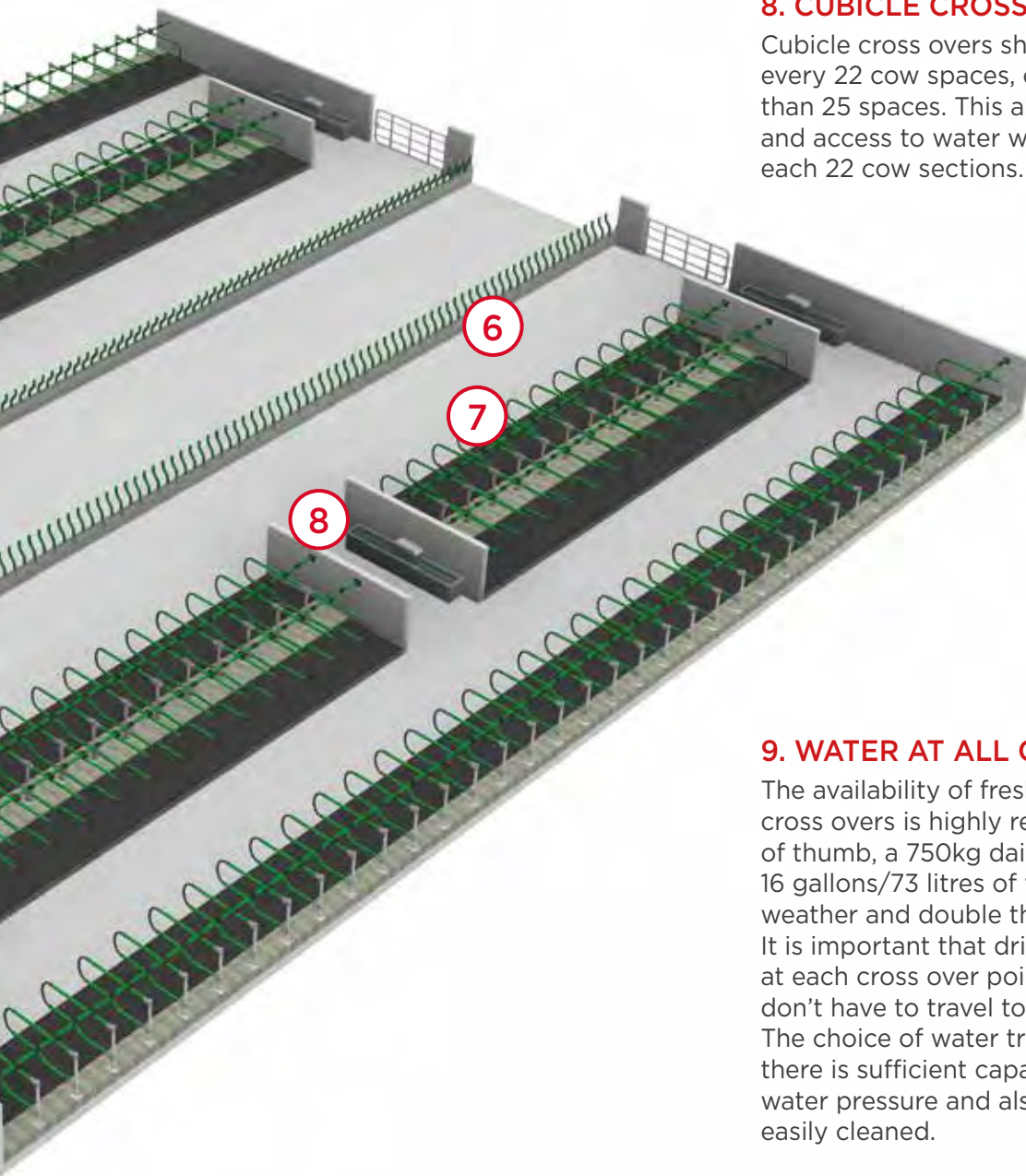
Cows require approximately 2ft/0.6 metre head space to feed sufficiently. This is particularly necessary for freshly calved cows where body reserves need to be maintained through maximizing intakes.

7. CUBICLE TO FEED FACE

The cubicle to feed face distance is critical and should be at least 15 feet/4.57 metres. This space will facilitate cleaner passages and easier movement of cows from their cubicles to the feed face.

8. CUBICLE CROSS OVERS

Cubicle cross overs should be located after every 22 cow spaces, or certainly after no more than 25 spaces. This allows for better cow flow and access to water which should be located at each 22 cow sections.



9. WATER AT ALL CROSS OVERS

The availability of fresh clean water at all cross overs is highly recommended. As a rule of thumb, a 750kg dairy cow will consume 16 gallons/73 litres of water per day in cold weather and double that amount in hot weather. It is important that drinking troughs are placed at each cross over point in a shed, so that cows don't have to travel too far to access the trough. The choice of water trough is also important so there is sufficient capacity in the trough, good water pressure and also that the troughs are easily cleaned.

We can also arrange a **FREE** on-farm visit to discuss your current dairy housing expansion plans, during which our experienced team will provide you with an on-site technical design and advisory service.


Contact us for a **FREE** on-farm consultation on **+353 (0) 90 9643344** or email **INFO@EASYFIX.COM**



GET IN TOUCH:

 Persse Business Park,
Ballinasloe, Co. Galway
Ireland H53 VK10

 WWW.EASYFIX.COM
 INFO@EASYFIX.COM

 INTL: +353(0)90 96 43344
IRL: 1850 850 750
UK: 0845 089 6040