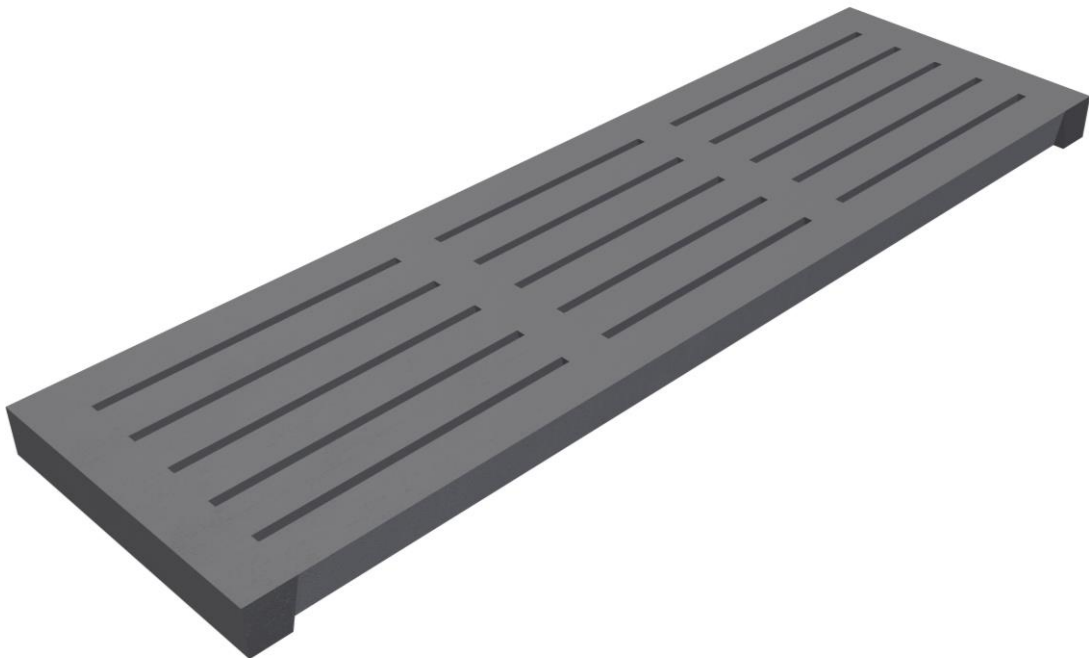




Measuring A Slat

Instruction Guide



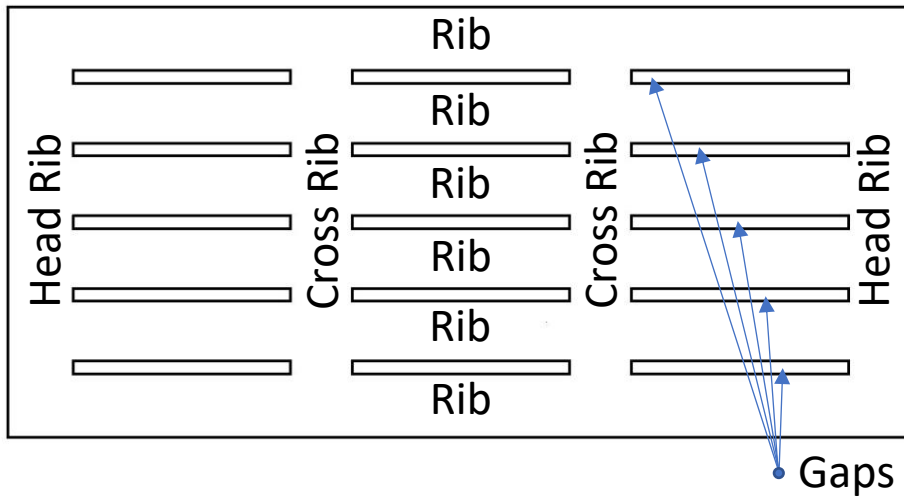
www.easyfix.com

Persse Business Park, Ballinasloe, Co. Galway. H53 VK10.

CIM V1 20

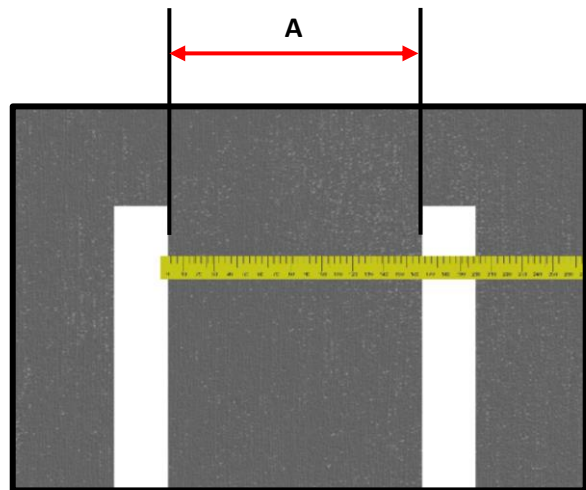
Anatomy of a Slat

A section of slats made from a singular piece of concrete is referred to as a gang.



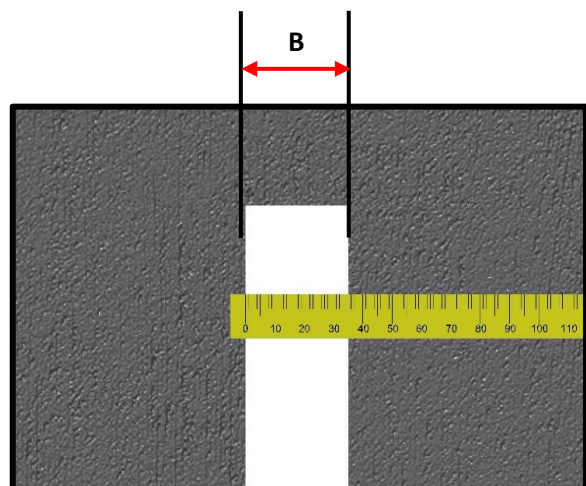
Measuring the Ribs & Gaps

Measure the individual concrete **rib** (mm). Take several measurements throughout the shed to make sure all ribs are the same. If ribs in the same gang of slats are a different measurement, make sure to note both measurements and their location.



Rib	
Label	Measurement
A	

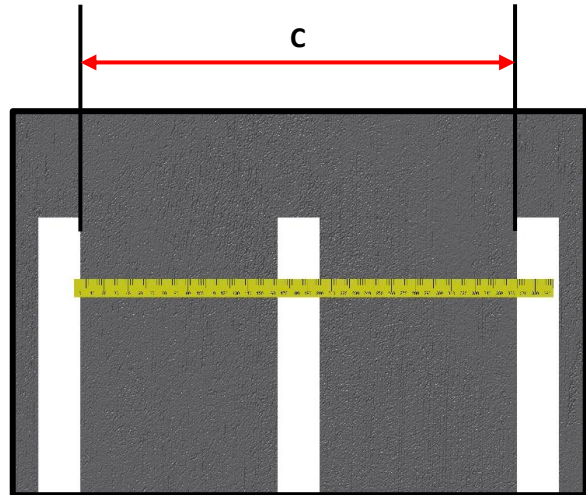
Measure the **gap/slot** in the slat (mm). Take several measurements throughout the shed to make sure all gaps/slots are the same. If gaps in the same gang of slats are a different measurement, make sure to note both measurements and their location.



Gap	
Label	Measurement
B	

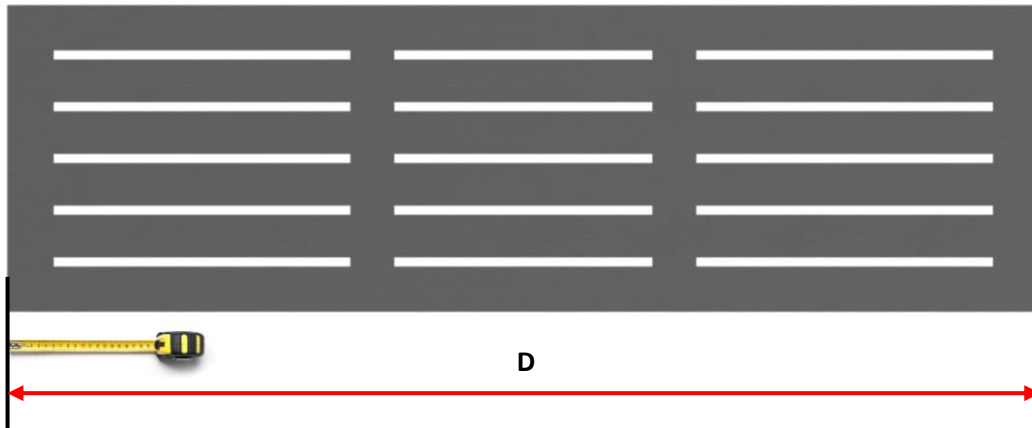
Measuring the Ribs & Cross Ribs

Measure **2R+G (2 Ribs + 1 Gap)** on the slat (*mm*). Take several measurements throughout the shed to make sure all are the same.



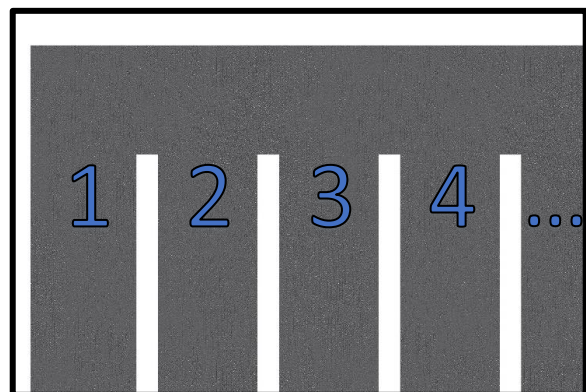
2R + G	
Label	Measurement
C	

Measure the overall length of the slat.



Length	
Label	Measurement
D	

Count the number of individual ribs. The total number will determine how many pieces of rubber are required.



Count

Slat Design

Measure the ribs and cross ribs locations and illustrate on the box to the right the slat layout and dimensions.

Draw the crossribs and ribs just as seen below, in Figure 1. Shade in the solid members.

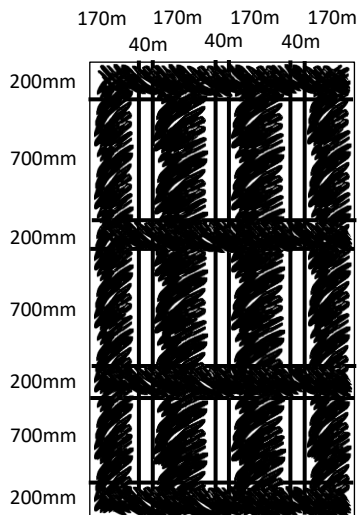
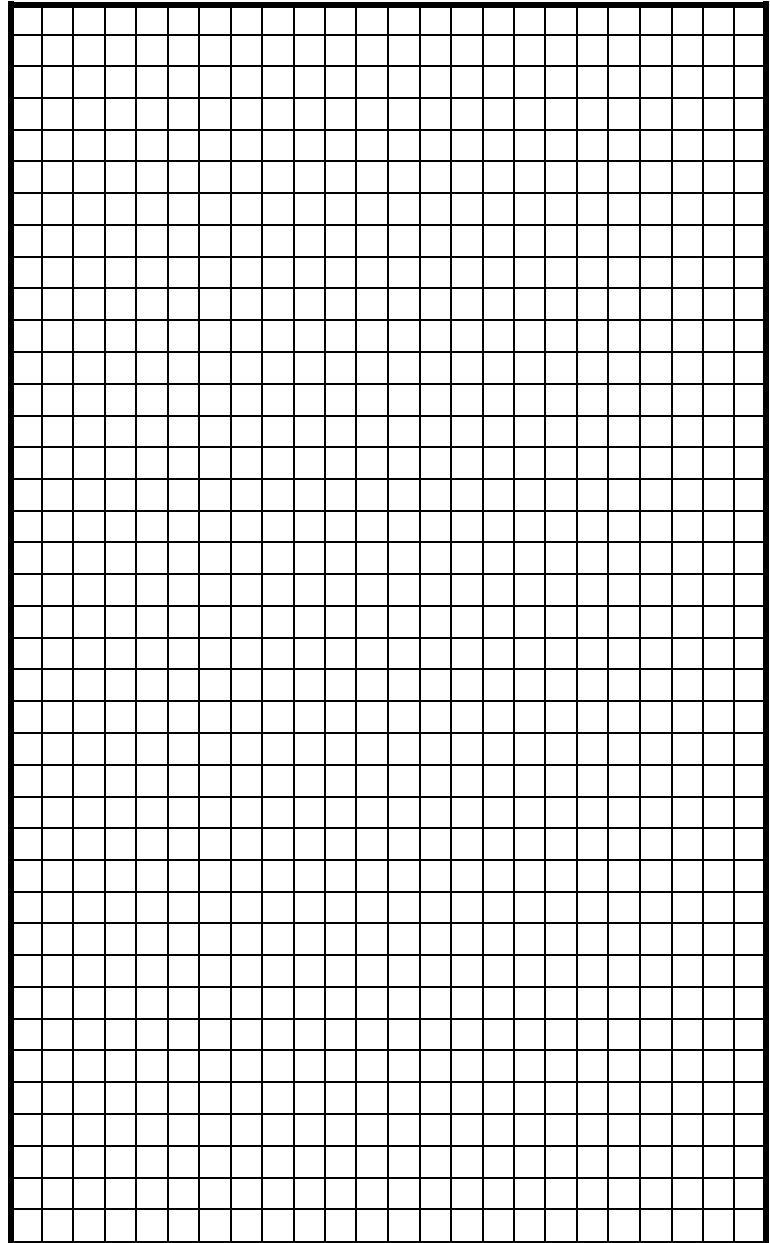


Figure 1: Sample drawing



Notes